

INPS **RAIL** Solutions

A DIVISION OF INPS GROUP



Your single source rail solution.

inps GROUP
inpsgroup.com

ultra**hund**

MEX/CAN
Int.

AUTOGRAPH
IMAGING SPECIALISTS

natsco
Tunnel Solutions

S&C Rail Solutions

IEP

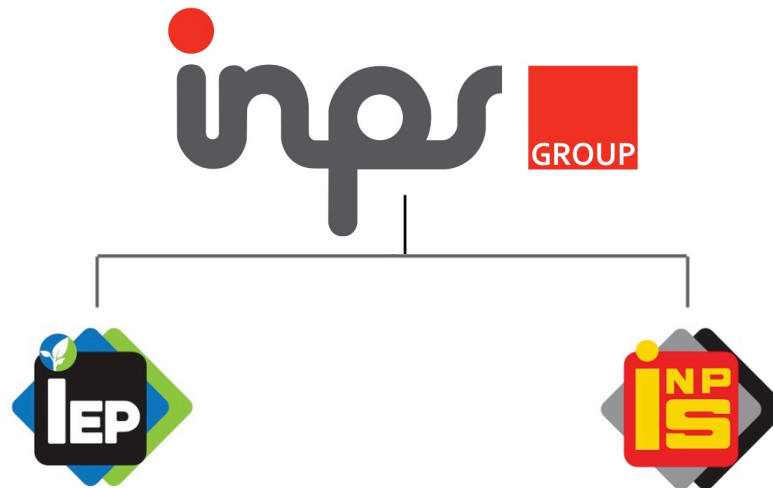
INPS

INPS RAIL Solutions

A DIVISION OF INPS GROUP



The strong foundation built under this structure means you can be confident that we have the competency and economic background necessary for supporting all our customer needs.



INPS **RAIL** Solutions

A DIVISION OF INPS GROUP



cab interiors



freight labeling set / railcar decals



conspicuity strips



custom graphics



onsite graphic installation & removal



anti-graffiti surface coatings

INPS Services

Engineering & Conceptual Design
Prototyping & Testing
Graphic Design & Artwork
Consultation Services
Project Management

INPS Ongoing Support

24 hour production 5-7 days a week
Installation by INPS
Testing
Maintenance

Quality Materials You Can Trust

3M™ Select Graphic Provider – Platinum
3M™ Certified Graphics Installation Company
3M™ MCS™ Warranty, the most comprehensive warranty
in the industry





cab interiors



freight labeling set / railcar decals



conspicuity strips



custom graphics



onsite graphic installation & removal



anti-graffiti surface coatings

International Name Plate Supplies

Founded as a manufacturer of locomotive graphics in 1966, INPS Rail has become a leading provider and manufacturer of components for the rail industry. Our team of 480 skilled professionals are located in Canada, the United States and Mexico.

Through INPS' position in the railway industry and its regulations, we pride ourselves on being a true manufacturer, providing your company with full-scale solutions, including design and installation, complete procurement services, component retrofits and kits.

Let INPS become a key member of your team





cab interiors



freight labeling set / railcar decals



conspicuity strips



custom graphics



onsite graphic installation & removal



anti-graffiti surface coatings

LOCATIONS

CANADA

London, Ontario
Milton, Ontario

USA

Longview, Texas

MEXICO

Matamoros, Tamaulipas
Monclova, Coahuila
Frontera, Coahuila
Sahagun, Hidalgo
Tlaxcala, Tlaxcala





cab interiors



freight labeling set / railcar decals



conspicuity strips



custom graphics



onsite graphic installation & removal



anti-graffiti surface coatings

Quality Assurance

At International Name Plate Supplies Ltd., we are dedicated to providing defect-free world-class products and services at competitive prices. We accomplish this through personal contributions, teamwork, and continuous improvement.

In order to meet our objectives, a management system that satisfies the requirements of ISO 9001:2015 is maintained. We have appointed a management representative with the authority and responsibility to ensure continued compliance. Regular audits by internal, independent personnel and our customers' satisfaction are used as confirmation.

INPS has the responsibility to produce quality products and services, which meet or exceed our customer's requirements.

INPS understands that all documents and products are sensitive in nature and we place a high regard on our confidentiality agreement with our clients.





cab interiors



freight labeling set / railcar decals



conspicuity strips



custom graphics



onsite graphic installation & removal



anti-graffiti surface coatings

LOGOS, SLOGANS AND WRAPS

Branding is important in today's world

- Design and manufacture logos and slogans
- Standardized rail graphics
- Digital or screen printed process available
- All sizes - colours for any type of material
provide logos that accurately suit your vision

No job is too big or too small





cab interiors



freight labeling set / railcar decals



conspicuity strips



custom graphics



onsite graphic installation & removal



anti-graffiti surface coatings

DECAL KITS

Decal kits that integrate with your production.

Railcar Decal Kits

Ability to adapt the decal kitting process to your needs

Comprehensive and customized decal sets available to both OEM and remarking clients

Decal kits can include:

- Corporate Branding
- AAR FRA Regulation Decals
- Warning Labels
- Bulked or Kitted
- Paint Stencils
- Individually packaged and labeled

We can react to a short lead time





cab interiors



freight labeling set / railcar decals



conspicuity strips



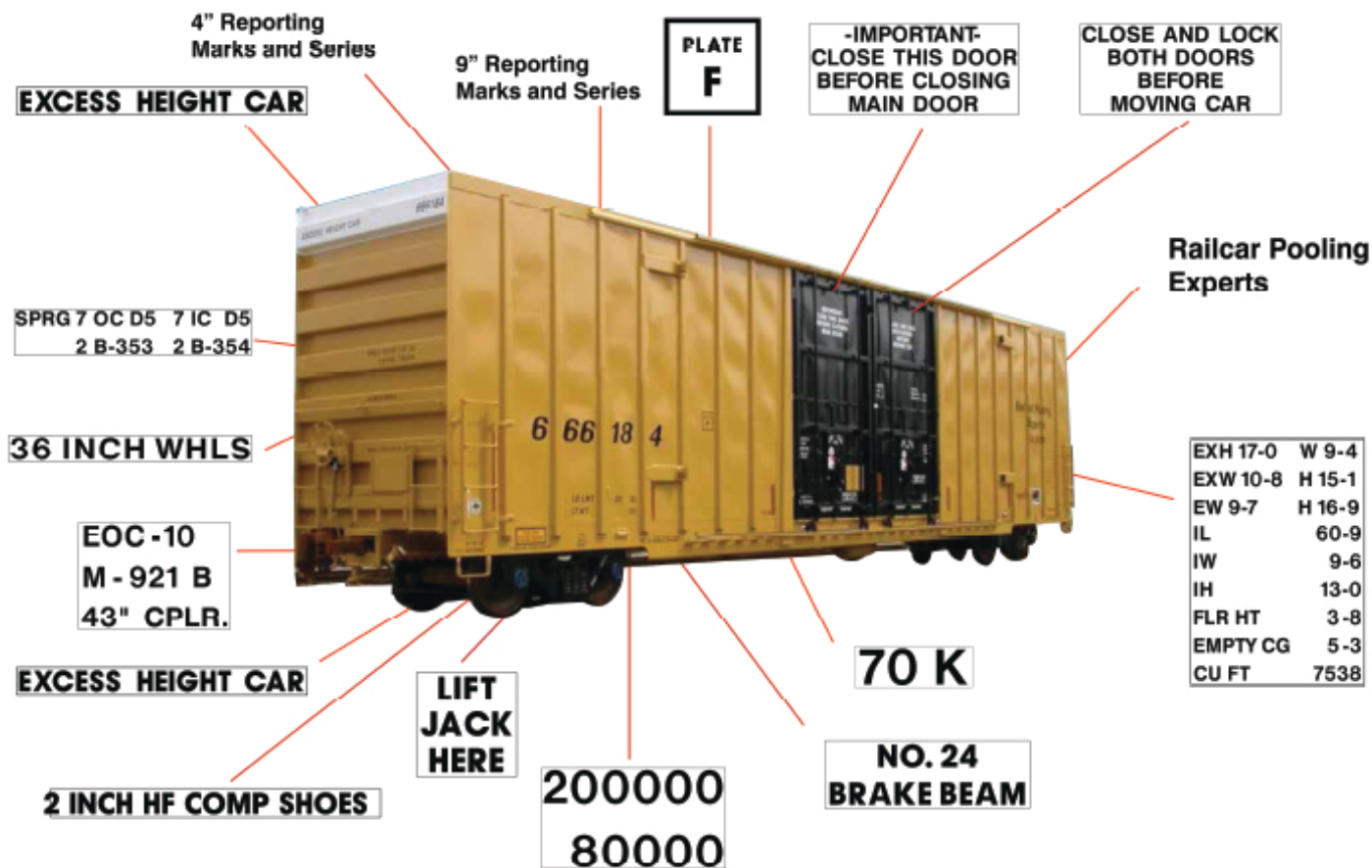
custom graphics



onsite graphic installation & removal



anti-graffiti surface coatings





cab interiors



freight labeling set / railcar decals



conspicuity strips



custom graphics



onsite graphic installation & removal



anti-graffiti surface coatings

RAIL DECAL KIT

Online Ordering

- Custom forms are designed to meet the needs for each car style
- The forms are car type specific
- Quantities, colors, revisions levels provide standardization
- INPS keeps current with AAR standards
- Once order is submitted, a confirmation is issued
- The order is processed as per negotiated lead times and pricing
- The form is then used as a packing slip and enclosed in your box and labelled by car number for ease of receiving

Shop Location: WAYCROSS GA ☐ Partial Kit Order

Shop Location: ☐ Partial Kit Order

Order Date: 04/21/2017 Due In Plant Date: 04/21/2017 P.O. #: _____

Ordered By: petapleton@inps.ca Copy To: _____ (separate all email addresses with a comma ",")

☐ Color Scheme = Black Car with WHITE DECALS 4690729000

☐ Color Scheme = White or Gray Car with BLACK DECALS 4690730000

☐ Color Scheme = OTHER (please specify decal color) 4690730000

Check appropriate box for all decals required.

	Color	Size	Qty	INPS Part #
<input checked="" type="checkbox"/> 1 Car Number		9"	2	INPS-1003-300
<input type="checkbox"/> 2 LD LMT LBS. KGS.		4"	2	INPS-1003-301
<input type="checkbox"/> 3 LT WT LBS. KGS.		3"	2	INPS-1003-302
<input type="checkbox"/> 4 Star Stencil		3"	2	INPS-1009-303
<input type="checkbox"/> 5 Plate "C"		10" X 10"	2	INPS-1009-145
<input type="checkbox"/> 6 AAR- BR BM		1-1/2"	2	INPS-1003-374
<input type="checkbox"/> 7 36 IN STL WHLS		1-1/2"	2	INPS-1009-375
<input type="checkbox"/> 8 SPRINGS D-		1-1/2"	2	INPS-1009-376
<input type="checkbox"/> 9 Shoes		1-1/2"	4	INPS-1009-311
<input type="checkbox"/> 10 Leased To		2"	2	INPS-1003-312
<input checked="" type="checkbox"/> 11 Defect Card		1/2"	1	INPS-1003-313
<input type="checkbox"/> 12 Manway Style		1"	1	
<input type="checkbox"/> 13 2 1/2 Outage @		1"	2	INPS-1009-306
<input type="checkbox"/> 14 SS Insp		1"	2	INPS-1009-307
<input type="checkbox"/> 15 Rule 8882 INSP		1"	2	INPS-1003-314
<input type="checkbox"/> 16 CAPV US GAL		2"	2	INPS-1009-378
<input type="checkbox"/> 17 CAPV L				
<input type="checkbox"/> 18 Water Capacity POUNDS		1 1/2"	2	INPS-1009-305

PART 1 OF 6

www.inpsrail.com



cab interiors



freight labeling set / railcar decals



conspicuity strips



custom graphics



onsite graphic installation & removal



anti-graffiti surface coatings

RAILCAR REMARKING/MOBILE CREWS

North American Wide Installation & Program Management

INPS manufactures and delivers products

Our capabilities include, but are not limited to:

- Decal removal and application
- Colour match patches so reporting numbers and logos can be remarked
- Reflective tape application
- Reporting marks
- AEI tag re-programming

Travel crews available North American wide for installation by 3M™ Certified Professionals

Training services ranging from a full week to on line webinars





cab interiors



freight labeling set / railcar decals



conspicuity strips



custom graphics



onsite graphic installation & removal



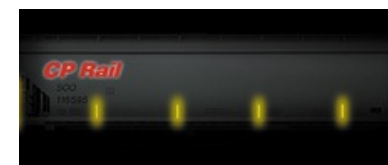
anti-graffiti surface coatings

CONSPICUITY TAPE

Innovative Brands such as:

- 3M™
 - Reflexite
 - Avery
- Available in a variety of lengths and colours to meet your needs
 - Improves vehicle visibility
 - Detection at dawn, dusk and at night
 - Railcars and locomotives meet the FRA 224 Standard

Be Seen





cab interiors



freight labeling set / railcar decals



conspicuity strips



custom graphics



onsite graphic installation & removal



anti-graffiti surface coatings

AEI TAGS

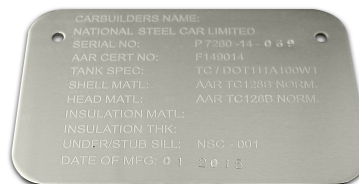
Local and Mobile Programming

- AEI (Automated Equipment Identification) Tags
- AT5118 Standard
- AT5133 High Temperature
- Programmed
- Non-programmed
- Mobile programming services are available



TANK ID TAGS

- Unique tank car identification plates
- 0.125" stainless steel





cab interiors



freight labeling set / railcar decals



conspicuity strips



custom graphics



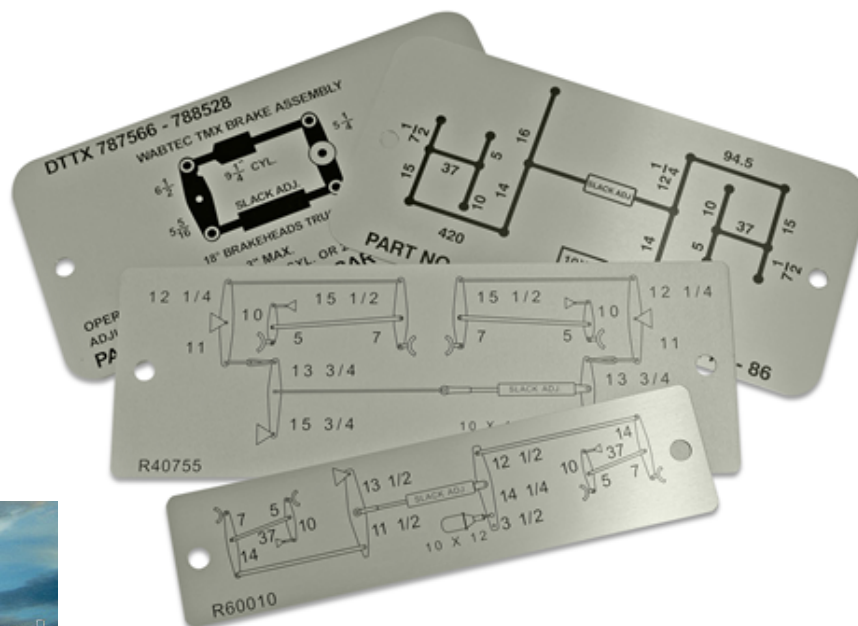
onsite graphic installation & removal



anti-graffiti surface coatings

BRAKE BADGE PLATES

- INPS produces metal photo aluminum plates showing brake rigging dimensions
- Years of experience enable us to offer next day service for your convenience





cab interiors



freight labeling set / railcar decals



conspicuity strips



custom graphics



onsite graphic installation & removal



anti-graffiti surface coatings

GRAPHICS - Exterior

- Logos and corporate images
- Anti-graffiti coatings
- Complete exterior locomotive wraps
(replaces expensive and time-consuming re-painting)
- Decals
- Paint stencils

Our graphic and wraps are available in virtually any dimension, texture and colour (including colour-matching to existing surfaces).

As an expert in the rail industry, INPS can help you meet and understand AAR regulations when it comes to signage and safety features.





cab interiors



freight labeling set / railcar decals



conspicuity strips



custom graphics



onsite graphic installation & removal



anti-graffiti surface coatings

MOBILE INSTALLATIONS

With you through every step of the process

We back up our products with all-inclusive installation services performed by our 3M™ certified professionals.

Our travel crew of graphics installers and other specialized personnel will move its equipment to your location, anywhere in North America.

Our installation capabilities include, but are not limited to:

- Graphic removal & application
- Locomotive component installations
- Sound dampening quiet cab installation and interior installations
- Locomotive wrapping
- A/C installations and APU installations
- Reflective tape application
- Window fitting



We install components manufactured in-house and by our network of suppliers.

As part of our value-added services, we also offer training sessions so that your own personnel may learn how to carry out these often complex installations.





cab interiors



freight labeling set / railcar decals



conspicuity strips



custom graphics



onsite graphic installation & removal



anti-graffiti surface coatings

GRAPHICS - Interior

Keep your outdated components under wraps

Interior graphics

- Full graphics kits
- Regulatory signage
- Glow-in-the-dark kits
- Control panels - LED
- Warnings
- Emergency graphics
- Decals
- Skins
- Switch lens caps
- Tag ID - gravoply

Our graphics and control panels are aesthetically pleasing to your engineers.





cab interiors



freight labeling set / railcar decals



conspicuity strips



custom graphics



onsite graphic installation & removal



anti-graffiti surface coatings

ANTIMICROBIAL SURFACE TREATMENTS

Studies show that millions of germs exist on high-touch surfaces in trains, planes and automobiles.

Germs can survive on surfaces for up to 48 hours and can be transferred to our hands.

The Aegis Microbe shield has been proven to reduce the counts of dangerous microorganisms on the control panels, seats, and bathrooms located in a locomotive.

It can kill up to 99% of germs on contact with its unique mode of action. It remains on guard to Control and Prevent the growth of harmful microorganisms between traditional cleaning and disinfection practices.





cab interiors



freight labeling set / railcar decals



conspicuity strips



custom graphics



onsite graphic installation & removal



anti-graffiti surface coatings

HPPL (High Performance Photoluminescent)

Safely light up the night

INPS has spent many years developing HPPL glow in the dark.

Our products include:

- Glow-in-the-dark safety decal kits
- Emergency path markings
- Exit signage
- Photoluminescent tape
- Warning signs

The installation of our top quality decals is made easy with a 3M™ adhesive backing.

All of our HPPL products are compliant with APTA and FRA regulations.





cab interiors



freight labeling set / railcar decals



conspicuity strips



custom graphics



onsite graphic installation & removal



anti-graffiti surface coatings

THE BANANA APU

Save on fuel without sacrificing crew comfort.

- Reduced size and weight
- 72 VDC
- The same price as the original locomotive APU first introduced over 15 years ago!
- Features a CAT/Perkins diesel engine that can be governed at adjustable RPMs
- The engine drives a 150 A, 72 VDC (11kW) generator that heats the locomotive coolant and lube oil, charges the batteries, and can be used to power cab heaters, lights and air conditioners, ensuring your crew's comfort
- The Banana takes green technology and ripens it to perfection, incorporating innovative new design and automation
- Advanced control system complete with adjustable on/off locomotive water temperature and battery set points and diagnostics with freeze frame data and real time data monitoring
- Reduces most excess idling, saving money on fuel and engine wear
- Meets EPA emissions regulations and local noise ordinances





cab interiors



freight labeling set / railcar decals



conspicuity strips



custom graphics



onsite graphic installation & removal



anti-graffiti surface coatings

SOUND DAMPENING PANELS

Drown out the noise

Our Quiet Ride sound dampening system reduces noise and vibration inside the cabin environment, making work more pleasant for your employees. This multi-layered panel system can be easily installed inside the locomotive by your staff or our team of professionals. Quiet Ride cleans up the look of the cabin interior and is custom-made to fit all locomotive models.

Benefits of the Quiet Ride system:

- Reduces noise inside the locomotive by two (2) decibels
- Can be installed without removing any existing accessories
- Esthetically pleasing lines and finishes
- Custom-designed to fit new-build or older locomotives

Our sound dampening products are compliant with all current industry standards.





cab interiors



freight labeling set / railcar decals



conspicuity strips



custom graphics



onsite graphic installation & removal



anti-graffiti surface coatings

CAPABILITIES

On site manufacturing capabilities include:

CNC Machining

Coating

Engraving

Finishing

Installation

Molding

Printing

Technical Engineering

Value Added

Modular Integration

Fabrication

- Router, Milling, CNC Knife Cutting, Waterjet Cutting
- Painting, Powder Coating
- Rotary, Laser, Etching, Photopolymer
- Digital Die Cutting, Die Cutting, Laminating/Masking, Embossing
- Graphics, Mechanical, Signage
- Thermoforming, Injection Molding, Extrusions, Fiberglass, Resin Casting
- Screen Printing, Digital Printing, Anodizing
- 3D Printing, Scanning, Design, Reverse Engineering, Prototyping & Testing
- Assembly, Kitting
- Ceiling & Wall Panels
- Plastic, Metal

CNC ROUTERING

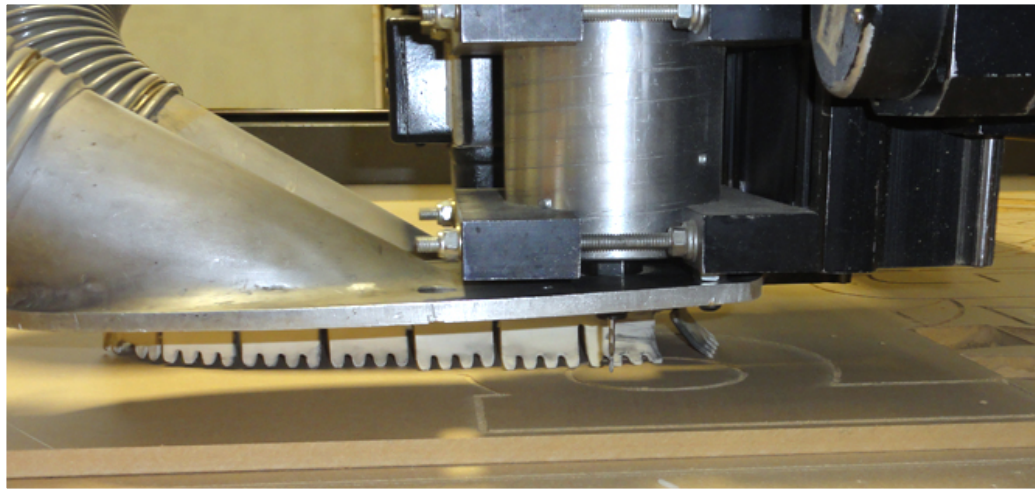
INPS can shape and profile MDF, wood, chipboard, MFC and metals.

OUR CAPABILITIES:

- 1-18" x 24" rotary engraver for metals
- 3-16" x 24" rotary engraver for plastics
- 3-60 x 120" router tables (see CNC Machining)
- Engraver or mill plastics, woods, metals

END PRODUCTS

- Dunnage
- Building Lettering
- Flooring
- Jigs
- Furniture Parts
- Plastic Sign Blanks



THIS DOCUMENT IS COPYRIGHT OF INPS LTD ALL RIGHTS RESERVED ©2017

On site manufacturing capabilities include:

CNC MACHINING

COATING | ENGRAVING | FINISHING | INSTALLATION | MOLDING | PRINTING | TECHNICAL ENGINEERING | VALUE ADDED | MODULAR INTEGRATION | FABRICATION

MILLING CENTRE

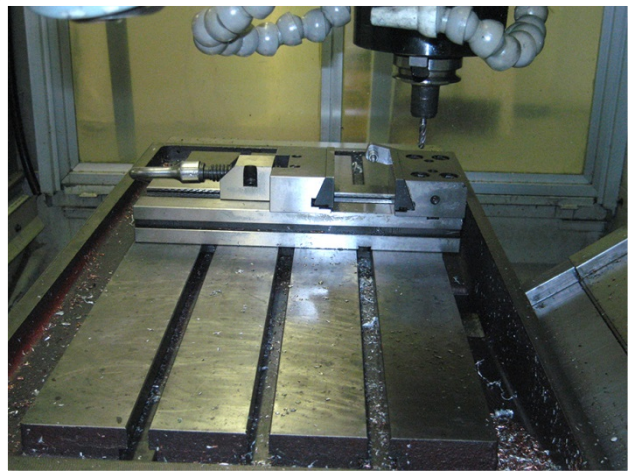
INPS can machine parts to precise sizes and shapes.

OUR CAPABILITIES:

- First MCV 641 CNC Vertical Machining Centre
- 24" x 16" Cutting Surface
- 18 Station Tool Changer
- Capable of CNC Machining Metals and Plastic

END PRODUCTS

- Metal Parts



THIS DOCUMENT IS COPYRIGHT OF INPS LTD ALL RIGHTS RESERVED ©2017

On site manufacturing capabilities include:

CNC MACHINING

COATING | ENGRAVING | FINISHING | INSTALLATION | MOLDING | PRINTING | TECHNICAL ENGINEERING | VALUE ADDED | MODULAR INTEGRATION | FABRICATION

CNC KNIFE CUTTING

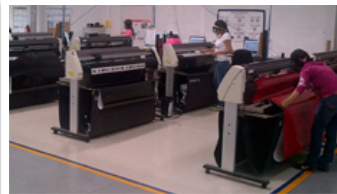
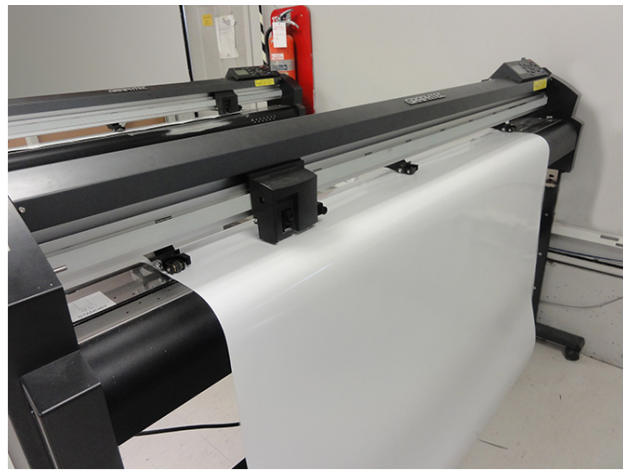
We can custom cut vinyl, aluminum, polycarbonate and other thin material to requested shapes and sizes.

OUR CAPABILITIES:

- All Systems have multiple tool heads and vision systems for registration
- 1 - 48" x 48" Flatbed Cutter
- 4 - 72" x 48" Flatbed Cutter
- 3 - 72" x 120" Flatbed Cutter

END PRODUCTS

- Unprinted Vinyl Films
- Printed Vinyl Films
- Thin Gauge Plastics such as ABS, Polycarbonate or Polyethylene
- Thin Aluminum Sheets
- Cardboard
- Corrugated Plastic



THIS DOCUMENT IS COPYRIGHT OF INPS LTD ALL RIGHTS RESERVED ©2017

WATER JET CUTTING

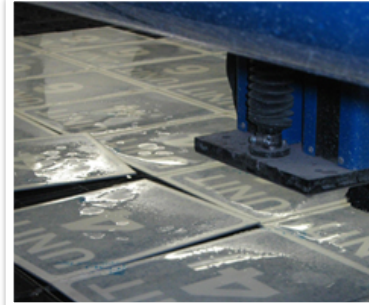
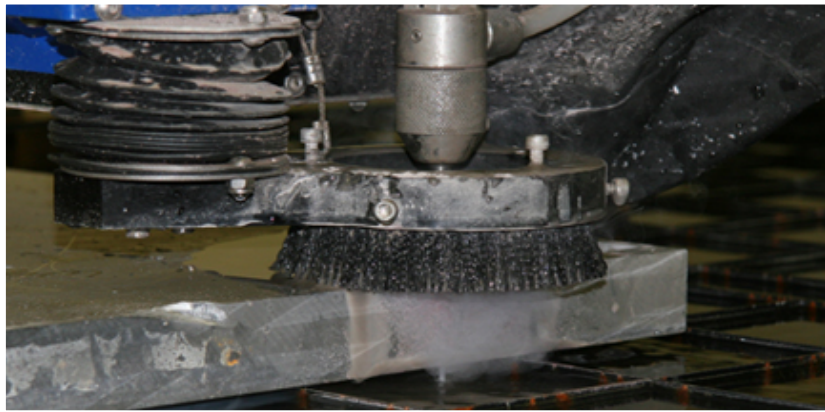
We can cut metals or other thick substrates on the Water-Jet.

OUR CAPABILITIES:

- 72" x 144" cutting area
- Able to cut material from 0.020" thick up to 10" thick
- Water only cut plastics, wood or other soft materials
- Water plus abrasive to cut hard substrates like glass, high pressure laminate, stainless steel, aluminum and other metals

END PRODUCTS

- Building Panels
- Sign Blanks
- Aluminum Lettering
- Glass
- Mirrors
- 2D Metal Parts
- 2D Fiberglass Parts



THIS DOCUMENT IS COPYRIGHT OF INPS LTD ALL RIGHTS RESERVED ©2017

On site manufacturing capabilities include:

CNC MACHINING

COATING | ENGRAVING | FINISHING | INSTALLATION | MOLDING | PRINTING | TECHNICAL ENGINEERING | VALUE ADDED | MODULAR INTEGRATION | FABRICATION

PAINTING

Painting is most commonly used to protect, color or provide texture to objects.

OUR CAPABILITIES:

- 10' x 10' x 10' spray booth
- Capable of HVLP spraying acrylics, urethanes enamels and other paint systems
- Able to create selectively masked painted parts
- Capable of painting for OEM automotive interior components
- Large oven to cure paints as required

END PRODUCTS

- Letters and Logos
- Metal Parts
- Plastic Parts
- Supplied Parts
- Automotive Parts
- Dash Panels
- Sign Faces



THIS DOCUMENT IS COPYRIGHT OF INPS LTD ALL RIGHTS RESERVED ©2017



On site manufacturing capabilities include:

CNC MACHINING | COATING | ENGRAVING | FINISHING | INSTALLATION | MOLDING | PRINTING | TECHNICAL ENGINEERING | VALUE ADDED | MODULAR INTEGRATION | FABRICATION

POWDER COATING

Durable, long life, high protective paint coating.

OUR CAPABILITIES:

- Automated Conveyor System max size 48" x 48"
- Manual up to 120" x 96"

END PRODUCTS

- Assemblies
- Metal Parts
- Name Plates



THIS DOCUMENT IS COPYRIGHT OF INPS LTD ALL RIGHTS RESERVED ©2017

On site manufacturing capabilities include:

CNC MACHINING | COATING | ENGRAVING | FINISHING | INSTALLATION | MOLDING | PRINTING | TECHNICAL ENGINEERING | VALUE ADDED | MODULAR INTEGRATION | FABRICATION

ROTARY

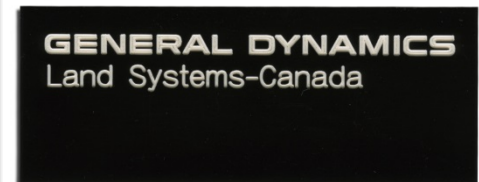
Indent and Engrave Texts and Logos on different substrates.

OUR CAPABILITIES:

- 1-18" x 24" rotary engraver for metals
- 3-16" x 24" rotary engraver for plastics
- 3-60 x 120" router tables (see CNC Machining)
- Engraver or mill plastics, woods, metals

END PRODUCTS

- Name Badges
- Desk Stands
- House Numbers
- Room Numbers
- Directionals
- ID Tags
- Name Plates
- Control Panels



THIS DOCUMENT IS COPYRIGHT OF INPS LTD ALL RIGHTS RESERVED ©2017

On site manufacturing capabilities include:

CNC MACHINING | COATING | ENGRAVING | FINISHING | INSTALLATION | MOLDING | PRINTING | TECHNICAL ENGINEERING | VALUE ADDED | MODULAR INTEGRATION | FABRICATION

ENGRAVING Capabilities

LASER

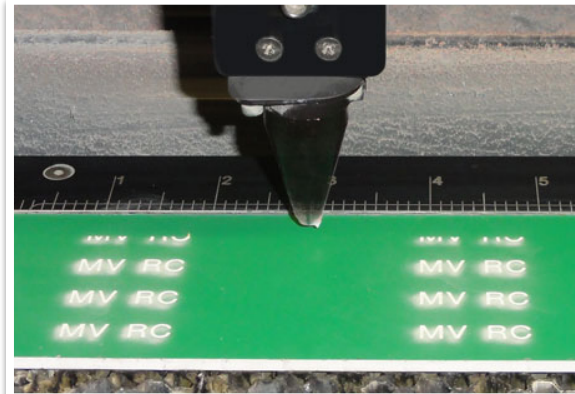
Laser and Engrave Texts and Logos on different substrates.

OUR CAPABILITIES:

- 2-60 Watt CO2 laser cutters
- 18" x 24" cutting surface
- Through cut acrylics and other plastics
- Engrave to a precise depth on plastics, woods and other materials
- Serialize, barcode or data matrices on metal or plastic nameplates

END PRODUCTS

- Name Badges
- Desk Stands
- House Numbers
- Room Numbers
- Directionals
- ID Tags
- Name Plates
- Control Panels
- Metal Plates
- Aluminum Plates
- UID Labels



THIS DOCUMENT IS COPYRIGHT OF INPS LTD ALL RIGHTS RESERVED ©2017

On site manufacturing capabilities include:

CNC MACHINING | COATING | ENGRAVING | FINISHING | INSTALLATION | MOLDING | PRINTING | TECHNICAL ENGINEERING | VALUE ADDED | MODULAR INTEGRATION | FABRICATION

ETCHING

Using baths of temperature-regulated etching chemicals to remove material to create an object with the desired shape or legend.

OUR CAPABILITIES:

- Aluminum, Stainless Steel, Brass
- Multiple Colors

END PRODUCTS

- Serial Numbers
- UID Labels
- Corporate Identification



THIS DOCUMENT IS COPYRIGHT OF INPS LTD ALL RIGHTS RESERVED ©2017

On site manufacturing capabilities include:

CNC MACHINING | COATING | ENGRAVING | FINISHING | INSTALLATION | MOLDING | PRINTING | TECHNICAL ENGINEERING | VALUE ADDED | MODULAR INTEGRATION | FABRICATION

PHOTOPOLYMER

A photo-sensitive synthetic compound that hardens when exposed to an ultraviolet light source.

OUR CAPABILITIES:

- 24" x 30" Orbital X Photopolymer Processor
- Painted colour or clear coat with UV protection



END PRODUCTS

- Tactile Signage
- Braille
- Wayfinding Signs
- Room Identification
- Door Numbers
- Directory Boards
- AODA and ADA Compliant Signage

On site manufacturing capabilities include:

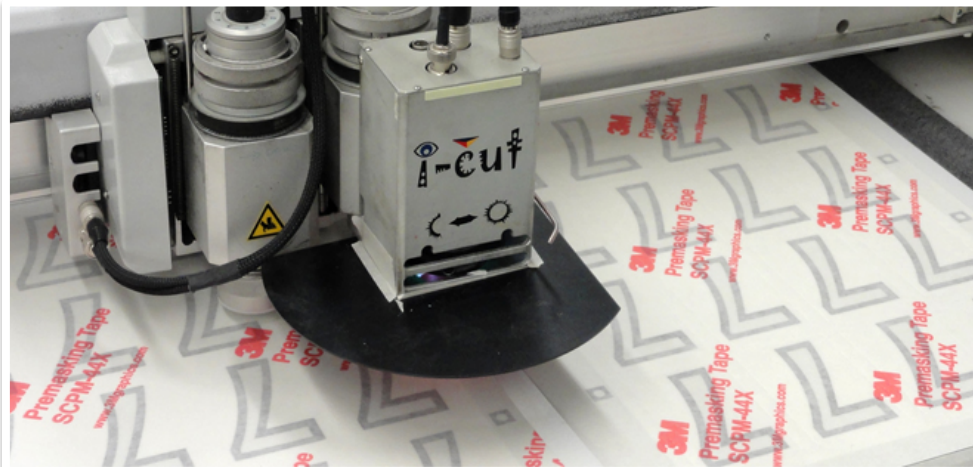
CNC MACHINING | COATING | ENGRAVING | FINISHING | INSTALLATION | MOLDING | PRINTING | TECHNICAL ENGINEERING | VALUE ADDED | MODULAR INTEGRATION | FABRICATION

DIGITAL DIE CUTTING

Computerized Cutter to fine tune your end products

OUR CAPABILITIES:

- All Systems have multiple tool heads and vision systems for registration
- 1 - 48" x 48" Flatbed Cutter
- 2 - 72" x 48" Flatbed Cutter
- 1 - 72" x 120" Flatbed Cutter.



THIS DOCUMENT IS COPYRIGHT OF INPS LTD ALL RIGHTS RESERVED ©2017

END PRODUCTS

- Printed Vinyl Films
- Unprinted Vinyl Films
- Logos
- Decals
- Vinyl Legends
- Polycarbonate Signage
- Polyethylene Signage
- Thin Aluminum Sheets
- Cardboard
- Corrugated Plastic
- ABS
- Fiberglass
- Gauge Plastics



On site manufacturing capabilities include:

CNC MACHINING | COATING | ENGRAVING | **FINISHING** | INSTALLATION | MOLDING | PRINTING | TECHNICAL ENGINEERING | VALUE ADDED | MODULAR INTEGRATION | FABRICATION

DIE CUTTING

Die Cutting (full cut) or kiss cutting (partial cut) Materials.

OUR CAPABILITIES:

- 1 – 29" x 36" Clam shell with heat and embossing dwell cycle
- 1 – 36" x 60" Flatbed hydraulic with heat and embossing dwell cycle



END PRODUCTS

- Logos
- Decals
- Labels
- Face Plates
- Control Panels
- Plastics
- Polycarbonate Products

THIS DOCUMENT IS COPYRIGHT OF INPS LTD ALL RIGHTS RESERVED ©2017

On site manufacturing capabilities include:

CNC MACHINING | COATING | ENGRAVING | FINISHING | INSTALLATION | MOLDING | PRINTING | TECHNICAL ENGINEERING | VALUE ADDED | MODULAR INTEGRATION | FABRICATION

LAMINATING / MASKING

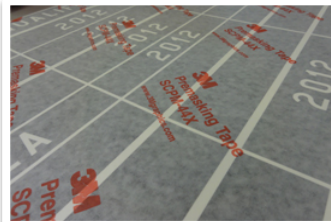
Providing a protective film, an adhesive or laminate two parts together to make a product stronger.

OUR CAPABILITIES:

- 2 - 66" Multi roll / station Heater Laminators with unwind/slitting and rewind options
- 6 - 60" Cold Laminators with unwind / rewind options
- 6 - 36" Cold Laminators with unwind option

END PRODUCTS

- Anti-Graffiti
- Decals
- Masking
- Panels
- Pre-Spacing
- Scratch Resistance



THIS DOCUMENT IS COPYRIGHT OF INPS LTD ALL RIGHTS RESERVED ©2017



On site manufacturing capabilities include:

CNC MACHINING | COATING | ENGRAVING | **FINISHING** | INSTALLATION | MOLDING | PRINTING | TECHNICAL ENGINEERING | VALUE ADDED | MODULAR INTEGRATION | FABRICATION

EMBOSSING

Embossing – a male and female die to form a raised component of a sign.

OUR CAPABILITIES:

- 1 - 29" x 36" Clam Shell with heat and embossing dwell cycle
- 1 - 36" x 60" Flatbed Hydraulic with heat and embossing dwell cycle

END PRODUCTS

- Braille Signage
- Domed Name Plates



THIS DOCUMENT IS COPYRIGHT OF INPS LTD ALL RIGHTS RESERVED ©2017

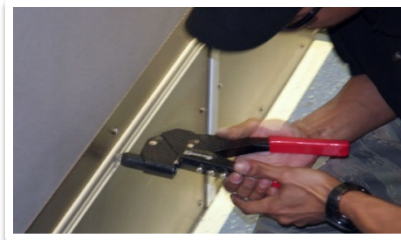


On site manufacturing capabilities include:

CNC MACHINING | COATING | ENGRAVING | FINISHING | INSTALLATION | MOLDING | PRINTING | TECHNICAL ENGINEERING | VALUE ADDED | MODULAR INTEGRATION | FABRICATION

INSTALLATION Services

- Experienced with transit car installations including: flooring, carpet, windows, signage and mechanical parts
- WHMIS and Job Site Safety
- Certifications include Fall Arrest, Lift Operation, WHMIS and Job Site Safety
- Goal is to achieve quality, efficient, safe and respectful installs
- Tidiness and professionalism is important
- Our installers have basic and advanced training on Wall, Floor and Vehicle Graphics from 3M™ Canada
- Local and North American wide 3M™ Certified installers



GRAPHICS INSTALLATION

OUR CAPABILITIES:

- Removal and Installation
- From simple vinyl lettering and stripping to complete wraps
- Experienced with long term or short term projects in industrial and railroad environments

MECHANICAL INSTALLATION

MULTIPLE MECHANICAL PROJECTS INCLUDING:

- Carpet
- Sub Flooring and Flooring Systems
- Door Systems
- Electrical
- Windows
- Stairs
- LLEPM and Anti Slip Surfaces

SIGNAGE INSTALLATION

- Letters and Logos
- Acrylic Sign Faces
- Banners
- Interior / Exterior Wayfinding Signage
- Regulatory and Lawn Signs

On site manufacturing capabilities include:

CNC MACHINING | COATING | ENGRAVING | FINISHING | **INSTALLATION** | MOLDING | PRINTING | TECHNICAL ENGINEERING | VALUE ADDED | MODULAR INTEGRATION | FABRICATION

THERMOFORMING

Creating a product out of a plastic sheet.

OUR CAPABILITIES:

- Multiple machine from 2' x 2' up to 60" x 96"
- Inflation and vacuum assisted capable
- Upper and lower platen machines
- Rapid tool development
- Thermo laminating of decorative films



THIS DOCUMENT IS COPYRIGHT OF INPS LTD ALL RIGHTS RESERVED ©2017

END PRODUCTS

- Design to finish
- Trays
- Wall Panels
- Door panels
- Ceiling panels
- Window panels
- Document holders
- Raised letters
- Sign blanks
- House Plates
- OEM Components
- Custom Plastic Parts
- Housings



INJECTION MOLDING

Using a mold cavity to configure from the smallest component to entire body panels of cars.

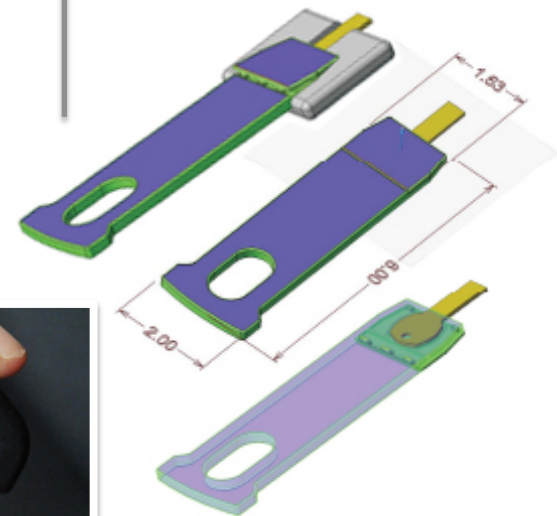
OUR CAPABILITIES:

- 17 Molders
- Insert molding (injecting plastic around metals)
- 50 tons up to 1000 tons



END PRODUCTS

- Automotive Parts
- Railroad Parts
- Locomotive Parts
- Other OEM Parts



THIS DOCUMENT IS COPYRIGHT OF INPS LTD ALL RIGHTS RESERVED ©2017

On site manufacturing capabilities include:

CNC MACHINING | COATING | ENGRAVING | FINISHING | INSTALLATION | MOLDING | PRINTING | TECHNICAL ENGINEERING | VALUE ADDED | MODULAR INTEGRATION | FABRICATION

EXTRUSIONS

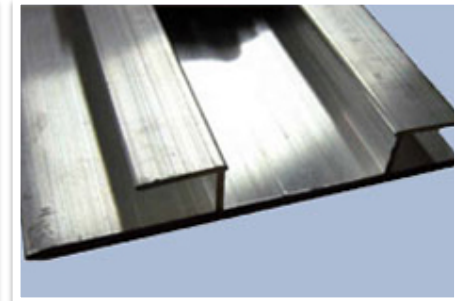
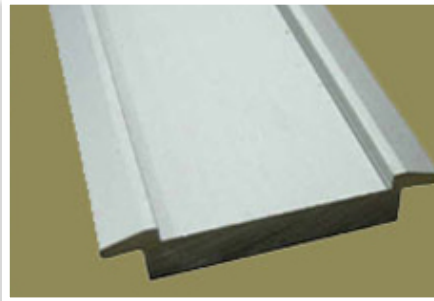
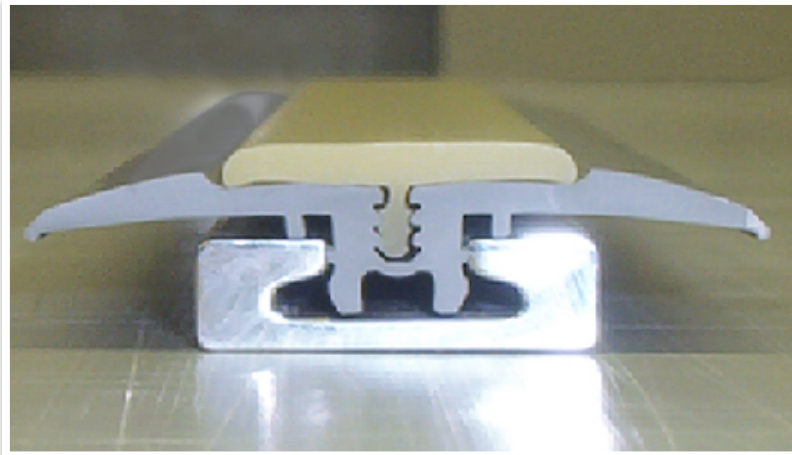
INPS can create finished parts with an excellent surface finish.

OUR CAPABILITIES:

- Aluminum
- Rigid Plastics
- Thermoplastic Elastomers

END PRODUCTS

- Floor Tracking
- Custom Sign Applications



THIS DOCUMENT IS COPYRIGHT OF INPS LTD ALL RIGHTS RESERVED ©2017

On site manufacturing capabilities include:

CNC MACHINING | COATING | ENGRAVING | FINISHING | INSTALLATION | MOLDING | PRINTING | TECHNICAL ENGINEERING | VALUE ADDED | MODULAR INTEGRATION | FABRICATION

RESIN CASTING

Resin casting is a method of plastic casting where a mold is filled with a liquid synthetic resin, which then hardens.

OUR CAPABILITIES:

- Urethane Foams
- Urethane Skins

END PRODUCTS

- Floor Tracking
- Custom Sign Applications
- Sound Dampening
- Headliners



THIS DOCUMENT IS COPYRIGHT OF INPS LTD ALL RIGHTS RESERVED ©2017

On site manufacturing capabilities include:

CNC MACHINING | COATING | ENGRAVING | FINISHING | INSTALLATION | MOLDING | PRINTING | TECHNICAL ENGINEERING | VALUE ADDED | MODULAR INTEGRATION | FABRICATION

FIBERGLASS

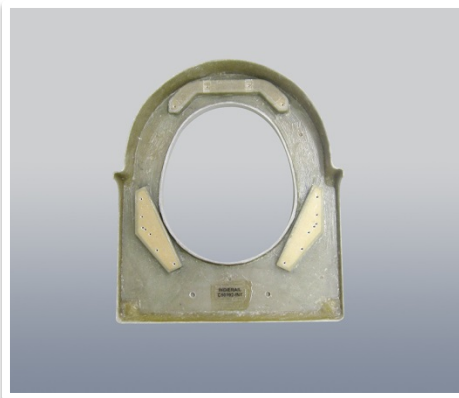
A type of fiber reinforced plastic where the reinforcement fiber is specifically glass fiber.

OUR CAPABILITIES:

- Integration with Metal Components
- Textured
- Inlays
- Fire Retardant

END PRODUCTS

- Railroad Interiors



THIS DOCUMENT IS COPYRIGHT OF INPS LTD ALL RIGHTS RESERVED ©2017

On site manufacturing capabilities include:

CNC MACHINING | COATING | ENGRAVING | FINISHING | INSTALLATION | MOLDING | PRINTING | TECHNICAL ENGINEERING | VALUE ADDED | MODULAR INTEGRATION | FABRICATION

SCREEN PRINTING

From small decals to large Fleet Wraps INPS has mastered the art of using a stencil to apply ink onto other substrates such as vinyl and plastic.

Custom signs – over 25 pieces

OUR CAPABILITIES:

- Over 10 printing presses
- Printers from 12" x 18" up to 60" x 144"
- 6 print station unit
- 6 curing stations
- Once load and unload station
- Maximum size 38" x 50"
- 6 color processes
- UV Cure Inks
- Conventional Cure Inks
- 2K Inks
- Clean Room Printing Capable
- 3M™ Platinum Select Screen Printer, MCS™ Warranty



END PRODUCTS

- Street Signs
- Decals
- Fleet Graphics
- Custom Designed Products
- Regulatory Signage
- Large Volume Wraps

On site manufacturing capabilities include:

CNC MACHINING | COATING | ENGRAVING | FINISHING | INSTALLATION | MOLDING | **PRINTING** | TECHNICAL ENGINEERING | VALUE ADDED | MODULAR INTEGRATION | FABRICATION

DIGITAL PRINTING

On demand printing capabilities, short turn around and even a modification of the image with each impression.

OUR CAPABILITIES:

- 3 Large Format Digital Presses
- Roll to Roll or Flatbed Printing
- 3M™ Certified Inks Used
- 3M™ Matched Component MCS™
- 3M™ Platinum Select UV Digital Printer
- 6 Color Plus White
- UV Cured Inks
- Long Term Outdoor Durability
- Use of 3M™ Preferred Installers



END PRODUCTS

- Multi-Colored Custom Signs
- Window Graphics
- Floor Graphics
- Wall Graphics
- Decals
- Real Estate Signs
- Fleet Graphics

THIS DOCUMENT IS COPYRIGHT OF INPS LTD ALL RIGHTS RESERVED ©2017

On site manufacturing capabilities include:

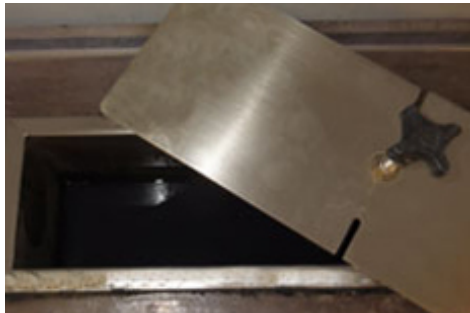
CNC MACHINING | COATING | ENGRAVING | FINISHING | INSTALLATION | MOLDING | **PRINTING** | TECHNICAL ENGINEERING | VALUE ADDED | MODULAR INTEGRATION | FABRICATION

ANODIZING

Utilizing the porous nature of unsealed anodized aluminum to create a sub-surface image.

OUR CAPABILITIES:

- Photosensitive images for low volumes, serial numbering, fine detailed
- Screen printed for larger quantities or multiple colours
- Bar Coding / Data Matrix
- UID Labelling



END PRODUCTS

- Serial Numbers
- UID Labels
- Bar Codes
- Corporate Identification

THIS DOCUMENT IS COPYRIGHT OF INPS LTD ALL RIGHTS RESERVED ©2017

On site manufacturing capabilities include:

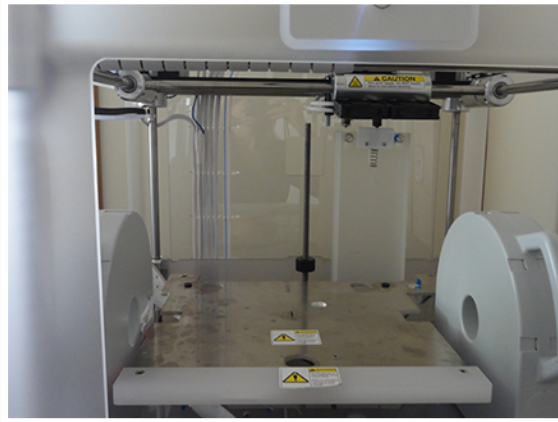
CNC MACHINING | COATING | ENGRAVING | FINISHING | INSTALLATION | MOLDING | **PRINTING** | TECHNICAL ENGINEERING | VALUE ADDED | MODULAR INTEGRATION | FABRICATION

TECHNICAL ENGINEERING Capabilities

In House research, design and development.

OUR CAPABILITIES:

- Product and Material Development
- Solids Modeling
- 3D Scanning for Rapid Reverse Engineering
- 3D Printing for Rapid Prototyping
- Material Selection
- Material Testing
- Product and Installation Training
- Process Support



END PRODUCTS

- Fiberglas Panels
- Thermoform Panels
- Metal Construction
- Dog Houses
- Bomb Boxes
- Custom Signs
- LED
- Glow-in-the-dark Products
- Foam Panels
- Sound Dampening



THIS DOCUMENT IS COPYRIGHT OF INPS LTD ALL RIGHTS RESERVED ©2017

On site manufacturing capabilities include:

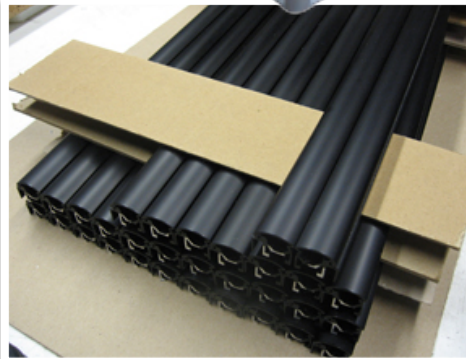
CNC MACHINING | COATING | ENGRAVING | FINISHING | INSTALLATION | MOLDING | PRINTING | TECHNICAL ENGINEERING | VALUE ADDED | MODULAR INTEGRATION | FABRICATION

ASSEMBLY

INPS provides the assembly from start to finish.

SAMPLE PROJECTS:

- Electrical switch assembly
- Tape switch assembly
- Sign system assembly
- Racking component assembly
- LED light assemblies



END PRODUCTS

- Frames
- Sign Systems
- Floor Tracking



THIS DOCUMENT IS COPYRIGHT OF INPS LTD ALL RIGHTS RESERVED ©2017

On site manufacturing capabilities include:

CNC MACHINING | COATING | ENGRAVING | FINISHING | INSTALLATION | MOLDING | PRINTING | TECHNICAL ENGINEERING | VALUE ADDED | MODULAR INTEGRATION | FABRICATION

KITTING

Packaging the entire job for easy installation.

EXPERIENCED IN:

- Supplying directly to production line
- Just in time
- Kits within kits
- Custom kit packages



END PRODUCTS

- Corporate Signage
- Rail Car Decals
- Fleet Graphics



THIS DOCUMENT IS COPYRIGHT OF INPS LTD ALL RIGHTS RESERVED ©2017

On site manufacturing capabilities include:

CNC MACHINING | COATING | ENGRAVING | FINISHING | INSTALLATION | MOLDING | PRINTING | TECHNICAL ENGINEERING | VALUE ADDED | MODULAR INTEGRATION | FABRICATION

Intricate engineering of finished structures.

SAMPLE PROJECTS:

- Modular ceiling structures where we integrate lighting systems with ceiling panels and ceiling structure to provide a finished modular assembly
- Engineer compartment modules
- Windscreen assemblies
- Wall panel modules

END PRODUCTS

- Ceiling Panels
- Wall Panels



THIS DOCUMENT IS COPYRIGHT OF INPS LTD ALL RIGHTS RESERVED ©2017

On site manufacturing capabilities include:

CNC MACHINING | COATING | ENGRAVING | FINISHING | INSTALLATION | MOLDING | PRINTING | TECHNICAL ENGINEERING | VALUE ADDED | MODULAR INTEGRATION | FABRICATION

PLASTIC FABRICATION

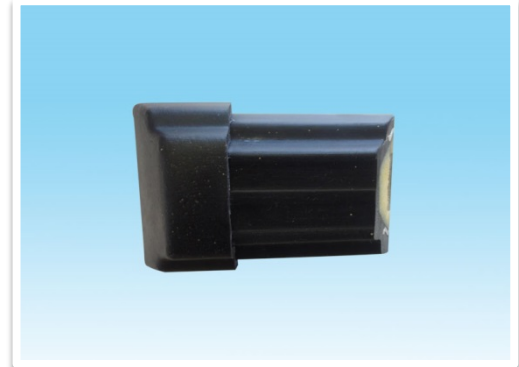
Building of plastic structures by forming, cutting, bending and assembling.

OUR CAPABILITIES:

- Thermoforming (Vacuum Forming)
- Routing
- Bending
- Gluing
- Assembly

END PRODUCTS

- Brushes
- Brochure Holders
- Signs
- Display Cases



THIS DOCUMENT IS COPYRIGHT OF INPS LTD ALL RIGHTS RESERVED ©2017

On site manufacturing capabilities include:

CNC MACHINING | COATING | ENGRAVING | FINISHING | INSTALLATION | MOLDING | PRINTING | TECHNICAL ENGINEERING | VALUE ADDED | MODULAR INTEGRATION | FABRICATION

METAL FABRICATION

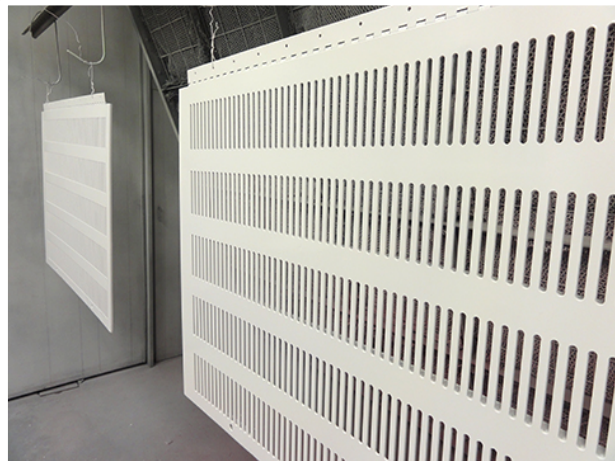
Building of metal structures by cutting, bending and assembling process.

OUR CAPABILITIES:

- Assembly
- Welding
- Bending
- Cutting
- Painting

END PRODUCTS

- Door Skins
- Skirt Covers
- Cut Out Panels
- Air Grill Covers
- Interior Exterior Panels



THIS DOCUMENT IS COPYRIGHT OF INPS LTD ALL RIGHTS RESERVED ©2017

On site manufacturing capabilities include:

CNC MACHINING | COATING | ENGRAVING | FINISHING | INSTALLATION | MOLDING | PRINTING | TECHNICAL ENGINEERING | VALUE ADDED | MODULAR INTEGRATION | FABRICATION

INPS **RAIL** Solutions

A DIVISION OF INPS GROUP

We've designed, manufactured and installed railroad products and graphics for over 50 years. INPS, your total rail solution.

AEI tags / programming
Anti-graffiti surface coatings
Brake badge plates
Cab interiors
Caution tags
Ceiling panels
Clear glass coatings
Colour match patches
Conspicuity tape
Control panels

Custom graphics & decals
Decal installation & removal
EPA
Generators
Maintenance of way & fleet vehicles
Microprocessors
Mobile crews
Name plates
On-site training
Railcar decal kits

Rail car / locomotive renumbering
Rail car / locomotive wrapping
Railroad graphics
Reflective tape
Stencils
Switch lens caps
Tank ID tags
Vinyl cut letters & numbers



www.inpsgroup.com
1 800 565 3509

