



Founded in 1966 , INPS Group has facilities through North America and Mexico.

Through the INPS Group of Companies our mission is to be your single source provider. Whatever your requirements we have the solution. INPS is a versatile and virtually unlimited manufacturer and provider of components for a large variety of industries. Through our in-house capabilities and numerous partner companies under the INPS Group, we provide full-scale component acquisition and design services to clients ranging from the largest industry players to smallest of niche businesses. No other provider seamlessly integrates itself into your company like we do.



CANADA

London, Ontario
Milton, Ontario

USA

Longview, Texas

MEXICO

Matamoros, Tamaulipas
Monclova, Coahuila
Frontera, Coahuila
Sahagun, Hidalgo
Tlaxcala, Tlaxcala

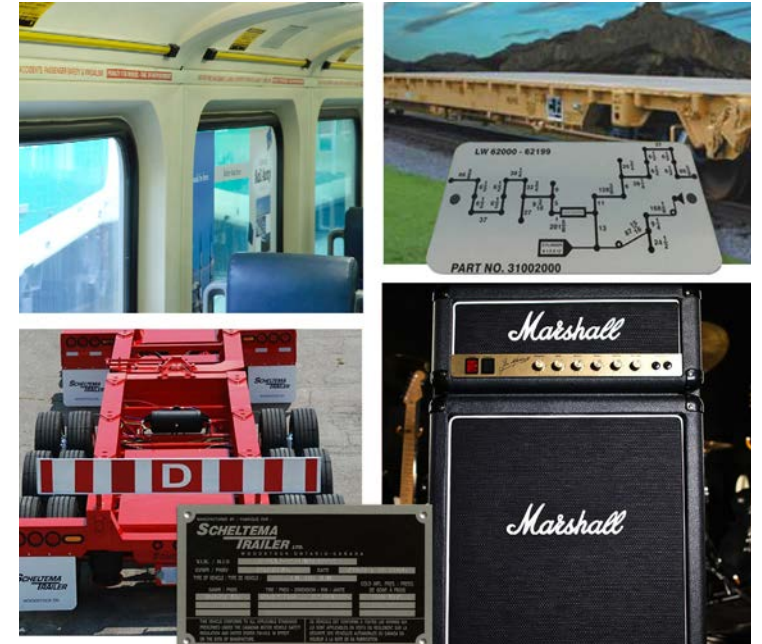




ORIGINAL EQUIPMENT MANUFACTURING (OEM) & COMPONENTS

Your Single Source for OEM Components

- Asset Wraps
- Capacity Tags
- Control Panels
- Decals & Overlays
- Dunnage
- Fiberglass Components
- HPPL LLEPM
- ID Tags
- Kitting
- Name Plates & Serial Plates
- Protective Films
- Stencils
- Sound Damping
- Vacuum Formed Molding
- Vehicle and Branding Wraps

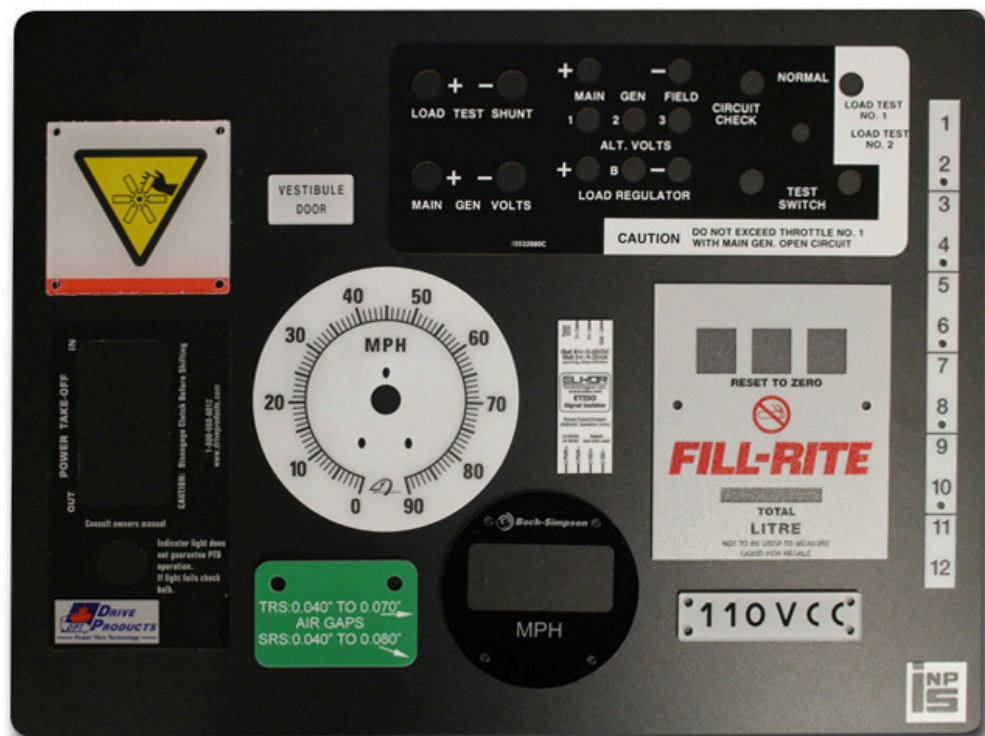




Asset Wraps

We can wrap anything! Extend your branding or unique message to everything from trash cans and recycle bins to trailers and zambonis! Unique messaging in unusual places create eye-catching buzz and beautify even the most mundane items.

With INPS you will never miss an opportunity to tell your story!



Capacity Tags

- Weight load
- Quantity
- Product Description
- Bar coding
- UID Labels
- Volumes

Our capacity tags use 3M adhesive tape backing which can be specifically chosen to provide the best bond for your application.



Control Panels

Control panels can be from various materials: stainless steel, aluminum, carbon steel, polycarbonates, polyester or a combination of materials. Engraving, screening, etching and anodizing are all processes completed in Inhouse.

Customer volumes can vary from prototype requirements through to production batches.

If required INPS can add a protective paint barrier to the Control Panel should the customers internal assembly process dictate the need.

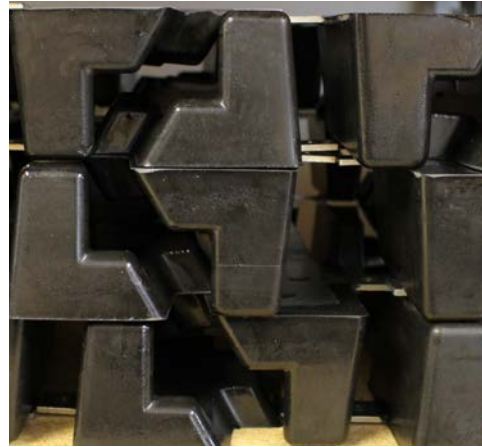
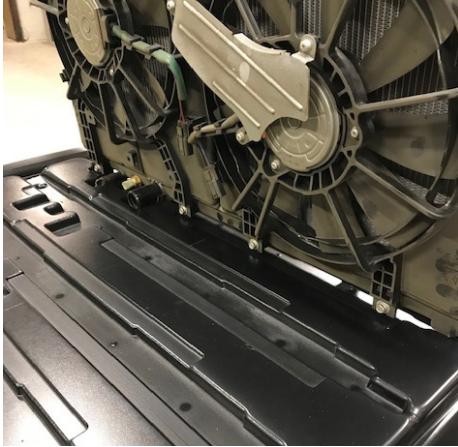


Decals & Overlays

Whether the decal is integral to the operation of your equipment, or simply the “finishing touch”, INPS supplied decals and overlays are the expression of your quality.

Decals help to identify your product, increase corporate recognition, branding and communicate instructions about your product to customers or operators.

Through shared collaboration we can assist with the design and application requirements. Consideration must be given to determining resistance to temperature, abrasion, chemicals, graffiti, UV fading and other elements.



Dunnage

- Organized stacking panels
- Creative solutions for dunnage requirements
- Molded urethane & foam

Heavy & Thin Gauge Vacuum Thermoforming

Extruded plastic sheet is heated and formed over a mold to create a contoured tray that cradles and protects each specific part. This process allows nesting of parts and increases part density.

Molded Urethane & Foam

Molded urethane is a highly durable, impact resistant option for protection and transportation of heavy machine parts, glass, engine components and large body panels. This form of dunnage is commonly used in custom racks but can be applied to other forms of packaging.

CNC Routed Parts

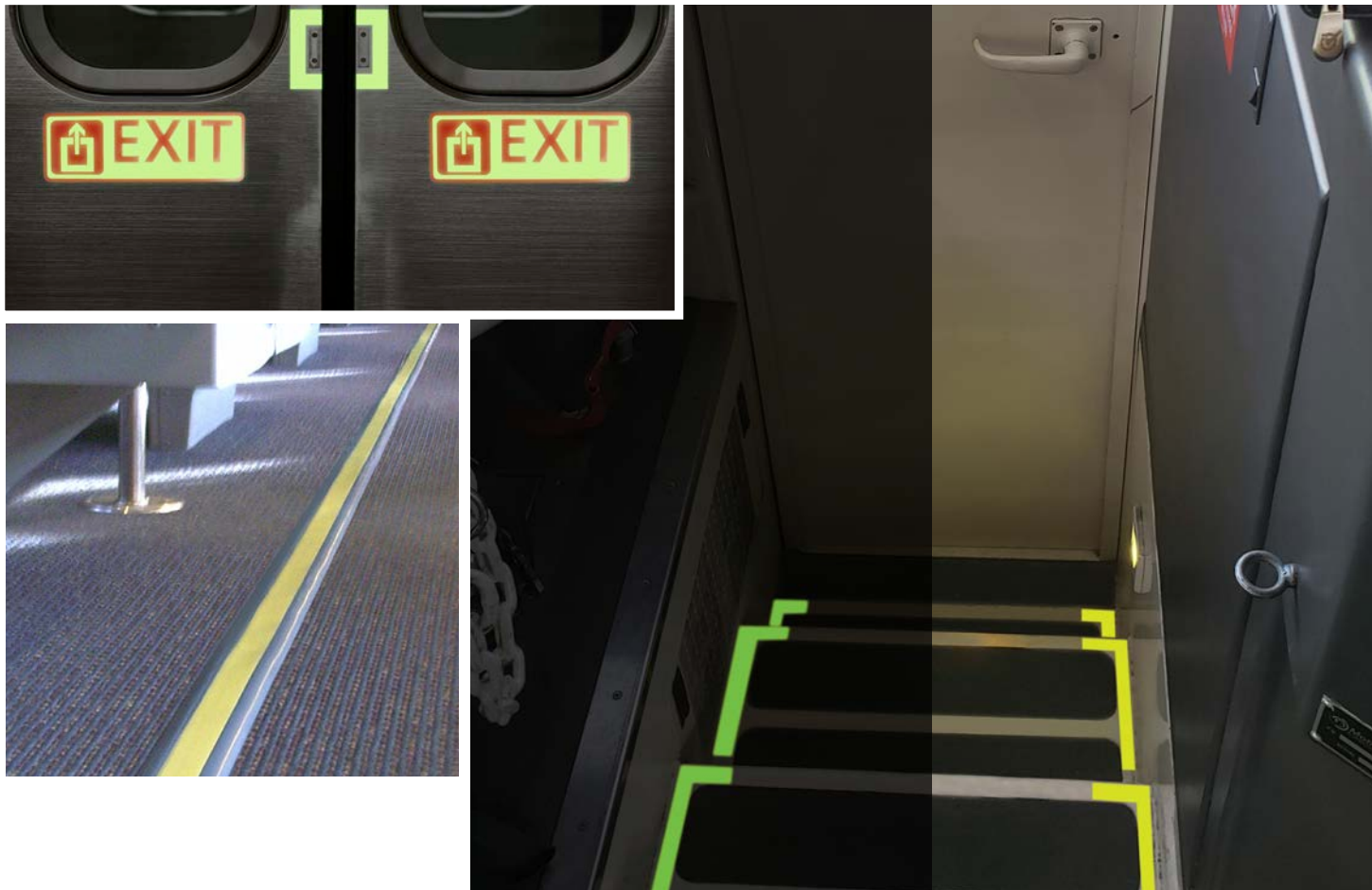
HDPE, DELRIN, UHMW, NYLON and PTFE are some of the dunnage materials that INPS machines. The machining process allows for detailed cradle options.



Fiberglass Components

Our Engineering team has the capability to receive design drawings electronically so we can build a mold to conform.

INPS would need clarification of whether the fibreglass components are designed for cosmetic or commercial purposes, as this would help determine manufacturing costs. Other key feature to making fibreglass parts is having a clear understanding of all the accessories required to make a complete assembly item. Items such as hardware, decorative laminates, integrated components or infused items are all options. INPS can comply to industry requirements and regulations for anti-smoke anti-fire and low toxicity.



HPPL & LLEPM

HPPL (High Performance Photoluminescent)

- Glow-in-the-dark safety decal kits
- Emergency path markings
- Exit signage
- Photoluminescent tape
- Warning signs

Low-Location Exit Path Marking (LLEPM)

Our LLEPM (low-location exit path marking) products are manufactured using the highest quality glow in the dark materials in terms of durability and safety. They are suitable for new or existing rubber, carpet floor coverings and walls.



ID Tags

Stainless Steel (etched and Color filled)

Stainless steel nameplates are chemically etched and infilled with color and 'baked' to provide a durable long-lasting label with contrast for ease of reading.

Aluminum (metal photo or etched)

Anodized aluminum offer a durable finish whereby the text detail is sealed within the grain of the aluminum.

Plastic / Lamacoid

Used as identification tags for machine panels, electrical panels, industrial machinery, caution or warning signs. They can be used to identify buttons, switches, lights and to warn machine operators of potential hazards. Suitable for both indoor & outdoor applications.

Polycarbonate (Printed and/or embossed)

Polycarbonate is a lightweight, durable, versatile material that is resistant to scratches, harsh elements and many chemicals. Used for decorative purposes, overlays, instructional labels, instrument panels, etc.



Kitting

Corporate Signage, Rail Car Decals, Fleet Graphics, Labels, Tags or Serial Plates

Combining a complete component kit for ease of installation or assembly.

Each kit is designed around the customers specific needs, ready for direct assembly line feed.

Kitting Capabilities

- Supplying directly to production line
- Custom kit packages
- Just in time
- Kits within kits



Name Plates & Serial Plates

We offer a complete range of products to satisfy your identification needs and can add any data you require in a number of forms.

These base materials can be made from stainless steel in brushed and mirror finishes or aluminum finished in matte, brushed or ionized in many colors. Foil rolls labels, polyester labels, extra durable windowed polycarbonate, serialized, bar coded, or tamper resistant vinyl labels are just a sample of the plates we offer.

If adhesives are required, we can supply to accommodate most assembly applications.



Protective Films

Anti-Graffiti Film

Protect surfaces from intentional and unintentional damage. Abrasion, acid etch, and scratch resistant.

Security Film

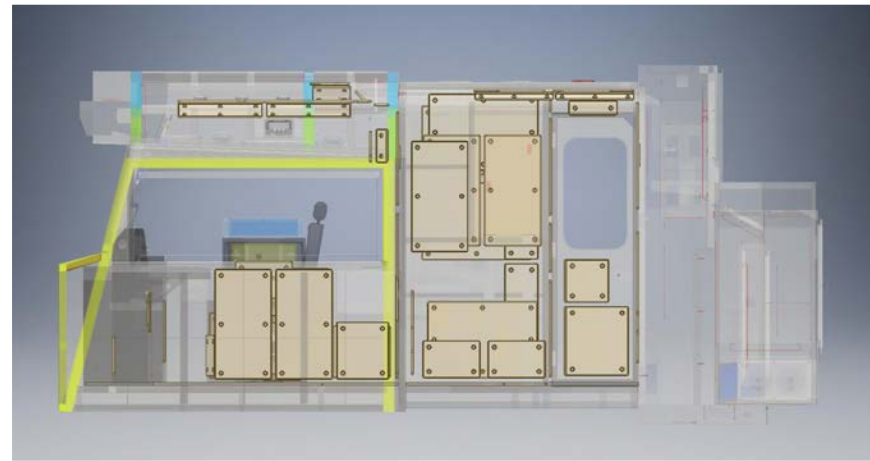
Protection against forced entry, bomb blasts, bullets, natural disasters

Safety Film

Protect against severe weather, personal injury and crime

Sun Control Film

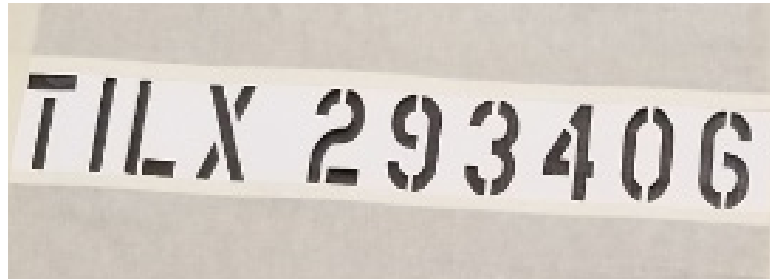
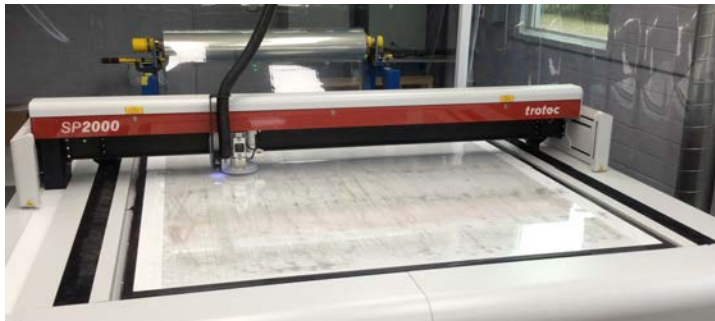
Minimize glare, reduce heat loss in winter and solar heat in summer while allowing natural light.



Sound Damping

INPS' Quiet Ride Sound Damping System reduces noise and vibration inside enclosed spaces.

Our sound damping products are compliant with all current industry standards, are fire retardant, as well as scratch and dent resistant.

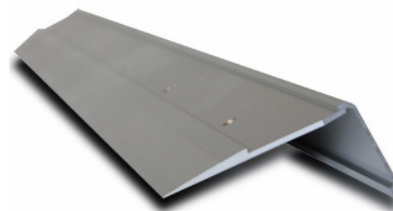


Stencils

Our CNC Cutter and Laser Engraver allow us to offer a variety of stencils:

- Magnetic
- Polyester
- Vinyl
- Polypropylene

Our Stencils can be made from the materials above and designed as a pattern or alphanumeric series to fit your application. In general, a stencil is ideal for application where decals are inadequate.



Vacuum Formed Molding

We vacuum form parts and subcomponents using a variety of materials including, polycarbonate, ABS and styrene to customer requirements.

Also available:

- Prototyping
- Assembly
- Mold manufacturing
- Decorating
- Finishing
- Molding of pre-printing parts



Vehicle & Branding Wraps

We have extensive experience in designing, styling, applying and engineering vehicle graphics. Reflective vinyl can give your fleet 24 hours of visibility. Extensive options including the use of custom color printing Ultra Violet Cured inks to ensure resistance to fading, peeling, lifting and cracking.

When supplying vehicle wraps for transit or fleet applications our team can pre-engineer to adhere to corporate colors and standards while considering effective spacing of the design.



Founded in 1966 in London, Ontario, INPS has grown to have an international manufacturing footprint which can readily supply the North American marketplace. Our team of 480 professionals can support a broad range of products while accommodating a diverse group of industries.

Let INPS Be Your Single Source Solution Provider





Our wide range of products, superior warranty program and the willingness to work with our customers, has enabled us to develop a substantial OEM customer base.

