

# INPS **RAIL** Solutions

A DIVISION OF INPS GROUP



Your single source rail solution.

A DIVISION OF INPS GROUP

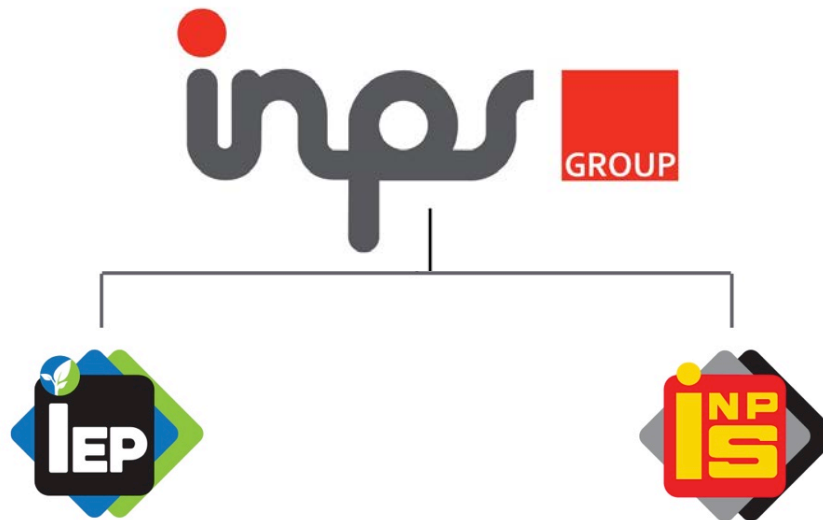


# INPS RAIL Solutions

A DIVISION OF INPS GROUP



The strong foundation built under this structure means you can be confident that we have the competency and economic background necessary for supporting all our customer needs.



# INPS **RAIL** Solutions

A DIVISION OF INPS GROUP



## INPS Services

Engineering & Conceptual Design  
Prototyping & Testing  
Graphic Design & Artwork  
Consultation Services  
Project Management

## INPS Ongoing Support

24 hour production 5-7 days a week  
Installation by INPS  
Testing  
Maintenance

## Quality Materials You Can Trust

3M™ Select Graphic Provider – Platinum  
3M™ Certified Graphics Installation Company  
3M™ MCS™ Warranty, the most comprehensive warranty  
in the industry







## International Name Plate Supplies

Founded as a manufacturer of locomotive graphics in 1966, INPS Rail has become a leading provider and manufacturer of components for the rail industry. Our team of 480 skilled professionals are located in Canada, the United States and Mexico.

Through INPS' position in the railway industry and its regulations, we pride ourselves on being a true manufacturer, providing your company with full-scale solutions, including design and installation, complete procurement services, component retrofits and kits.

**Let INPS become a key member of your team**



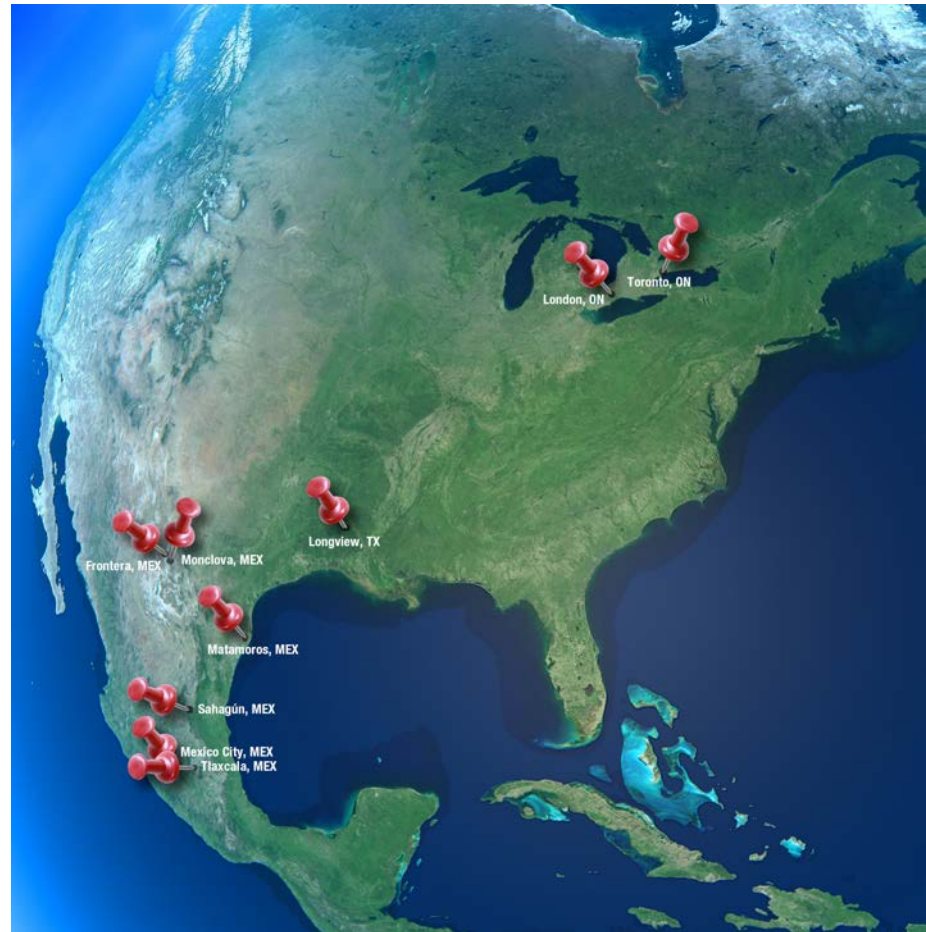


# LOCATIONS

**CANADA** London, Ontario  
Milton, Ontario

**USA** Longview, Texas

**MEXICO** Mexico City, CDMX  
Matamoros, Tamaulipas  
Monclova, Coahuila  
Frontera, Coahuila  
Sahagun, Hidalgo  
Tlaxcala, Tlaxcala





## Quality Assurance

At International Name Plate Supplies Ltd., we are dedicated to providing defect-free world-class products and services at competitive prices. We accomplish this through personal contributions, teamwork, and continuous improvement.

In order to meet our objectives, a management system that satisfies the requirements of ISO 9001:2015 is maintained. We have appointed a management representative with the authority and responsibility to ensure continued compliance. Regular audits by internal, independent personnel and our customers' satisfaction are used as confirmation.

INPS has the responsibility to produce quality products and services, which meet or exceed our customer's requirements.

INPS understands that all documents and products are sensitive in nature and we place a high regard on our confidentiality agreement with our clients.







# LOGOS, SLOGANS AND WRAPS

**Branding is important in today's world**

- Design and manufacture logos and slogans
- Standardized rail graphics
- Digital or screen printed process available
- All sizes - colours for any type of material provide logos that accurately suit your vision

**No job is too big or too small**





# DECAL KITS

## Decal kits that integrate with your production.

### Railcar Decal Kits

Ability to adapt the decal kitting process to your needs  
Comprehensive and customized decal sets available to both OEM and remarking clients

Decal kits can include:

- Corporate Branding
- AAR FRA Regulation Decals
- Warning Labels
- Bulked or Kitted
- Paint Stencils
- Individually packaged and labeled

**We can react to a short lead time**







cab interiors



freight labeling set / railcar decals



conspicuity strips



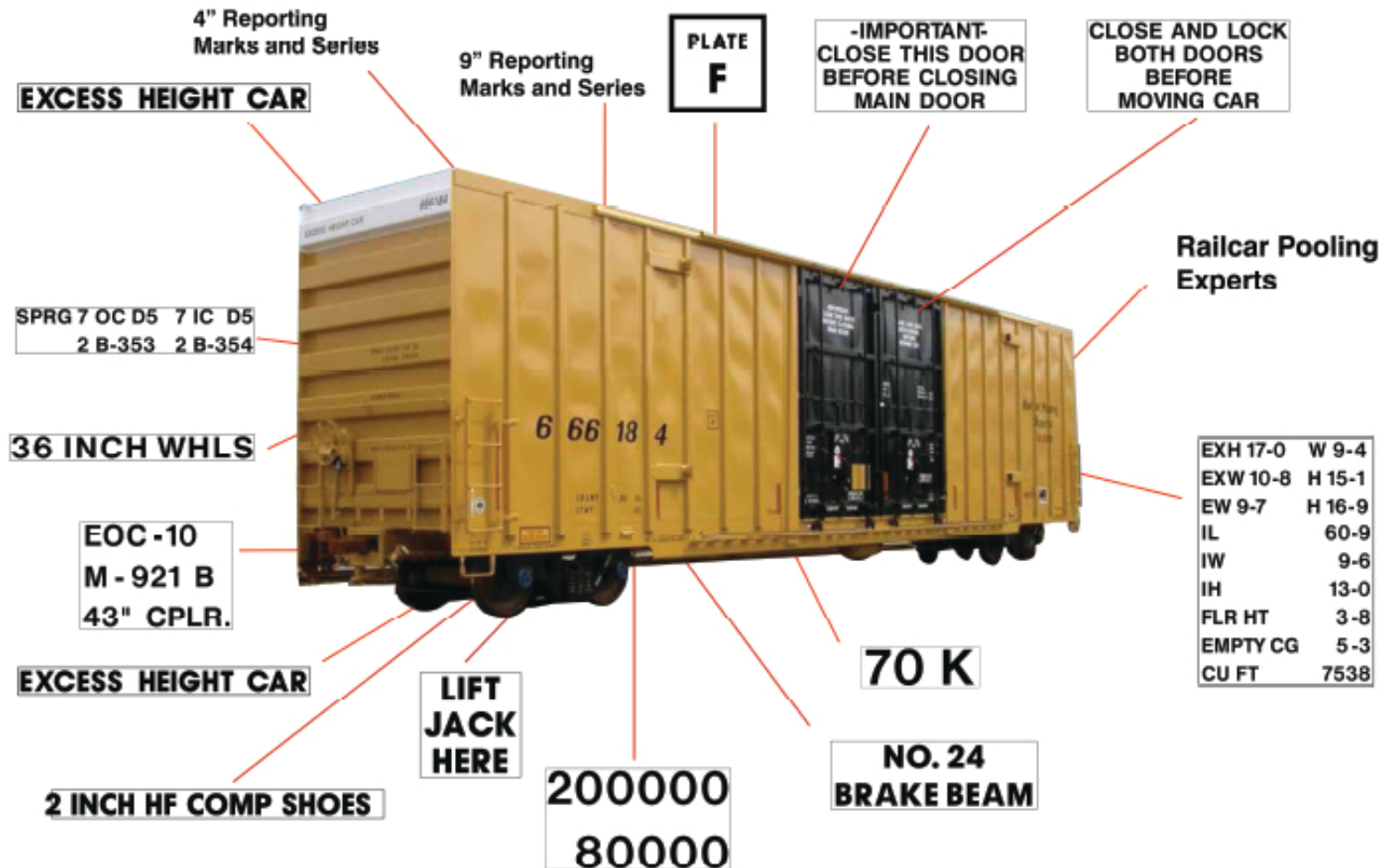
custom graphics



onsite graphic installation & removal



anti-graffiti surface coatings





# RAIL DECAL KIT

## Online Ordering

- Custom forms are designed to meet the needs for each car style
- The forms are car type specific
- Quantities, colors, revisions levels provide standardization
- INPS keeps current with AAR standards
- Once order is submitted, a confirmation is issued
- The order is processed as per negotiated lead times and pricing
- The form is then used as a packing slip and enclosed in your box and labelled by car number for ease of receiving

Shop Location:  ☐ Partial Kit Order

Order Date:  Due In Plant Date:  P.O. #1:

Ordered By:  Copy To:  (separate all email addresses with a comma ",")

PART 1 of 6

☐ Color Scheme = Black Car with WHITE DECALS 4690729000  
☐ Color Scheme = White or Gray Car with BLACK DECALS 4690730000  
☐ Color Scheme = OTHER (please specify decal color) 4690730000

Check appropriate box for all decals required.

	Car Number	Color	Size	Qty	INPS Part #
<input checked="" type="checkbox"/> 1			9"	2	INPS-1003-300
			4"	2	INPS-1003-301
<input type="checkbox"/> 2	LD LMT _____ LBS. _____ KGS. LT WT _____ LBS. _____ KGS. (location MM-YYYY)		3"	2	INPS-1003-302
<input type="checkbox"/> 3	Star Stencil		3"	2	INPS-1009-303
<input type="checkbox"/> 4	Plate "C"		10" X 10"	2	INPS-1009-145
<input type="checkbox"/> 5	AAR- _____ BR BM		1-1/2"	2	INPS-1003-374
<input type="checkbox"/> 6	36 IN STL WHLS		1-1/2"	2	INPS-1009-375
<input type="checkbox"/> 7	SPRINGS D- _____		1-1/2"	2	INPS-1009-376
<input type="checkbox"/> 8	<input checked="" type="checkbox"/> Shoes		1-1/2"	4	INPS-1009-311
<input type="checkbox"/> 9	Leased To _____		2"	2	INPS-1009-312
<input checked="" type="checkbox"/> 10	Defect Card		1/2"	1	INPS-1003-313
<input type="checkbox"/> 11	Manway Style _____ select from dropdown or enter style above.		1"	1	
<input type="checkbox"/> 12	2% Outage @ _____ GAL		1"	2	INPS-1009-308
<input type="checkbox"/> 13	SS _____ Insp _____		1"	2	INPS-1009-307
<input type="checkbox"/> 14	Rule 8882 INSP _____		1"	2	INPS-1003-314
<input type="checkbox"/> 15	CAPV _____ US GAL CAPV _____ L		2"	2	INPS-1009-378
<input type="checkbox"/> 16	Water Capacity _____ POUNDS		1 1/2"	2	INPS-1009-305

PART 1 OF 6

[www.inpsrail.com](http://www.inpsrail.com)





# RAILCAR REMARKING/MOBILE CREWS

## North American Wide Installation & Program Management

INPS manufactures and delivers products

Our capabilities include, but are not limited to:

- Decal removal and application
- Colour match patches so reporting numbers and logos can be remarked
- Reflective tape application
- Reporting marks
- AEI tag re-programming

Travel crews available North American wide for installation by 3M™ Certified Professionals

Training services ranging from a full week to on line webinars







# CONSPICUITY TAPE

*Be Seen*

## Innovative Brands such as:

- 3M™
  - Reflexite
  - Avery
- Available in a variety of lengths and colours to meet your needs
  - Improves vehicle visibility
  - Detection at dawn, dusk and at night
  - Railcars and locomotives meet the FRA 224 Standard





# CONSPICUITY TAPE COMPARISON PANEL KITS

**Retroreflective conspicuity tape on the sides of railcars improves motorist safety at railroad crossings.**

(AAR Comparison Panels - S-916 Comparator Panels)

AAR Panel Kits Include:

- Durable Pelican™ case
- Comparison panel with aluminum and magnetic backing
- Microfiber cloth
- Handling & usage guide



Each comparison panel is manufactured and calibrated to the retroreflective level specified in AAR Standard S-916, Retroreflective Comparator Panel Requirements.



# AEI TAGS

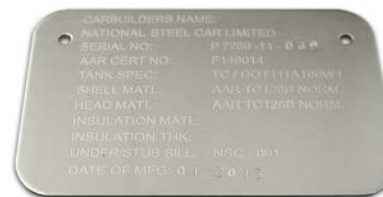
## Local and Mobile Programming

- AEI (Automated Equipment Identification) Tags
- AT5118 Standard
- AT5133 High Temperature
- Programmed
- Non-programmed
- Mobile programming services are available



# TANK ID TAGS

- Unique tank car identification plates
- 0.125" stainless steel

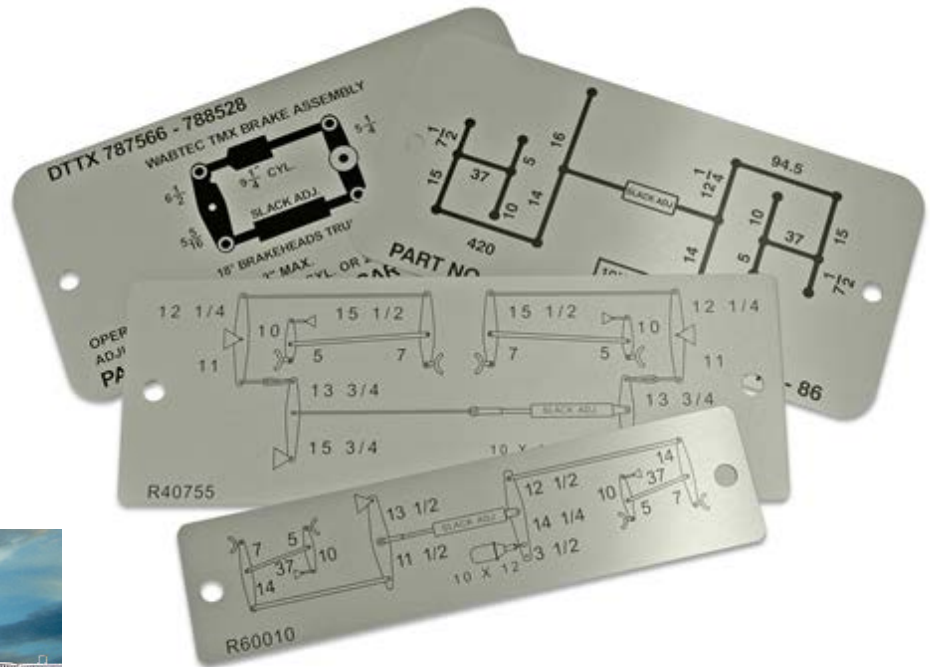






# BRAKE BADGE PLATES

- INPS produces metal photo aluminum plates showing brake rigging dimensions
- Years of experience enable us to offer next day service for your convenience





# GRAPHICS - Exterior

- Logos and corporate images
- Anti-graffiti coatings
- Complete exterior locomotive wraps (replaces expensive and time-consuming re-painting)
- Decals
- Paint stencils

Our graphic and wraps are available in virtually any dimension, texture and colour (including colour-matching to existing surfaces).

As an expert in the rail industry, INPS can help you meet and understand AAR regulations when it comes to signage and safety features.







# MOBILE INSTALLATIONS

## With you through every step of the process

We back up our products with all-inclusive installation services performed by our 3M™ certified professionals.

Our travel crew of graphics installers and other specialized personnel will move its equipment to your location, anywhere in North America.

Our installation capabilities include, but are not limited to:

- Graphic removal & application
- Locomotive component installations
- Sound dampening quiet cab installation and interior installations
- Locomotive wrapping
- A/C installations and APU installations
- Reflective tape application
- Window fitting

We install components manufactured in-house and by our network of suppliers.

As part of our value-added services, we also offer training sessions so that your own personnel may learn how to carry out these often complex installations.







# GRAPHICS - Interior

## Keep your outdated components under wraps

### Interior graphics

- Full graphics kits
- Regulatory signage
- Glow-in-the-dark kits
- Control panels - LED
- Warnings
- Emergency graphics
- Decals
- Skins
- Switch lens caps
- Tag ID - gravoply

Our graphics and control panels are aesthetically pleasing to your engineers.





# HPPL (High Performance Photoluminescent)

## Safely light up the night

INPS has spent many years developing HPPL glow in the dark.

Our products include:

- Glow-in-the-dark safety decal kits
- Emergency path markings
- Exit signage
- Photoluminescent tape
- Warning signs

The installation of our top quality decals is made easy with a 3M™ adhesive backing.

All of our HPPL products are compliant with APTA and FRA regulations.





# THE BANANA APU

**Save on fuel without sacrificing crew comfort.**

- Reduced size and weight
- 72 VDC
- The same price as the original locomotive APU first introduced over 15 years ago!
- Features a CAT/Perkins diesel engine that can be governed at adjustable RPMs
- The engine drives a 150 A, 72 VDC (11kW) generator that heats the locomotive coolant and lube oil, charges the batteries, and can be used to power cab heaters, lights and air conditioners, ensuring your crew's comfort
- The Banana takes green technology and ripens it to perfection, incorporating innovative new design and automation
- Advanced control system complete with adjustable on/off locomotive water temperature and battery set points and diagnostics with freeze frame data and real time data monitoring
- Reduces most excess idling, saving money on fuel and engine wear
- Meets EPA emissions regulations and local noise ordinances







# SOUND DAMPING PANELS

## Drown out the noise

Our Quiet Ride sound damping system reduces noise and vibration inside the cabin environment, making work more pleasant for your employees. This multi-layered panel system can be easily installed inside the locomotive by your staff or our team of professionals. Quiet Ride cleans up the look of the cabin interior and is custom-made to fit all locomotive models.

Benefits of the Quiet Ride system:

- Reduces noise inside the locomotive by two (2) decibels
- Can be installed without removing any existing accessories
- Esthetically pleasing lines and finishes
- Custom-designed to fit new-build or older locomotives

Our sound damping products are compliant with all current industry standards.



# INPS **RAIL** Solutions

A DIVISION OF INPS GROUP

We've designed, manufactured and installed railroad products and graphics for over 50 years. INPS, your total rail solution.

- AEI tags / programming
- Anti-graffiti surface coatings
- Brake badge plates
- Cab interiors
- Caution tags
- Ceiling panels
- Clear glass coatings
- Colour match patches
- Conspicuity tape
- Comparison panel kits

- Control panels
- Custom graphics & decals
- Decal installation & removal
- EPA
- Generators
- Maintenance of way & fleet vehicles
- Microprocessors
- Mobile crews
- Name plates
- On-site training

- Railcar decal kits
- Rail car / locomotive renumbering
- Rail car / locomotive wrapping
- Railroad graphics
- Reflective tape
- Stencils
- Switch lens caps
- Tank ID tags
- Vinyl cut letters & numbers



[www.inpsgroup.com](http://www.inpsgroup.com)  
1 800 565 3509

