



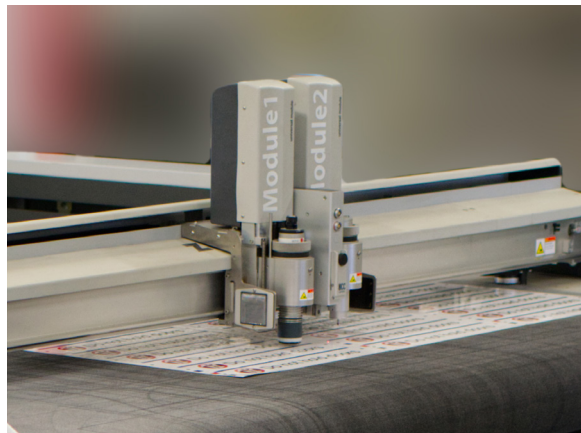
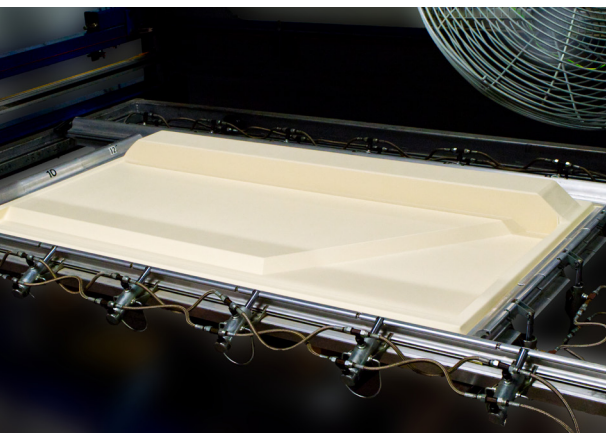
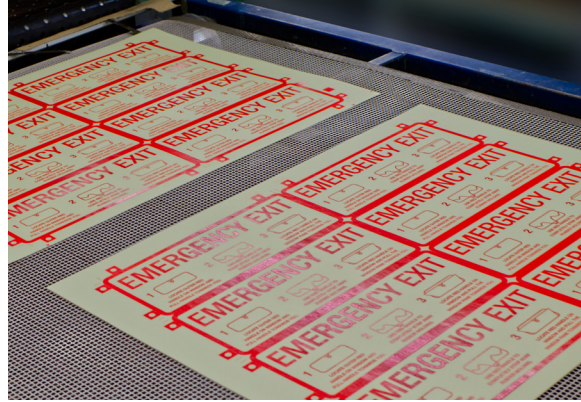
# Corporate Summary

A versatile and virtually  
unlimited manufacturer and  
provider of components.



INPS is a recognized diverse supplier with Women Business Enterprises Canada Council (WBE Canada).





# Who **We** Are

With a diverse portfolio and extensive range of capabilities, INPS is a manufacturing solution provider.





# About Us

INPS is a versatile and virtually unlimited manufacturer and provider of components for a variety of industries.

Our designers and engineers allow us to provide the most innovative technologies.

The keys to our overall success are our employees, capabilities, quality product offerings, and customer service.



# Locations



## CANADA

London, Ontario  
Milton, Ontario

## USA

Longview, Texas

## MEXICO

Matamoros, Tamaulipas  
Monclova, Coahuila  
Frontera, Coahuila  
Sahagun, Hidalgo  
Tlaxcala, Tlaxcala



## PARTNER COMPANIES



## BRANDS

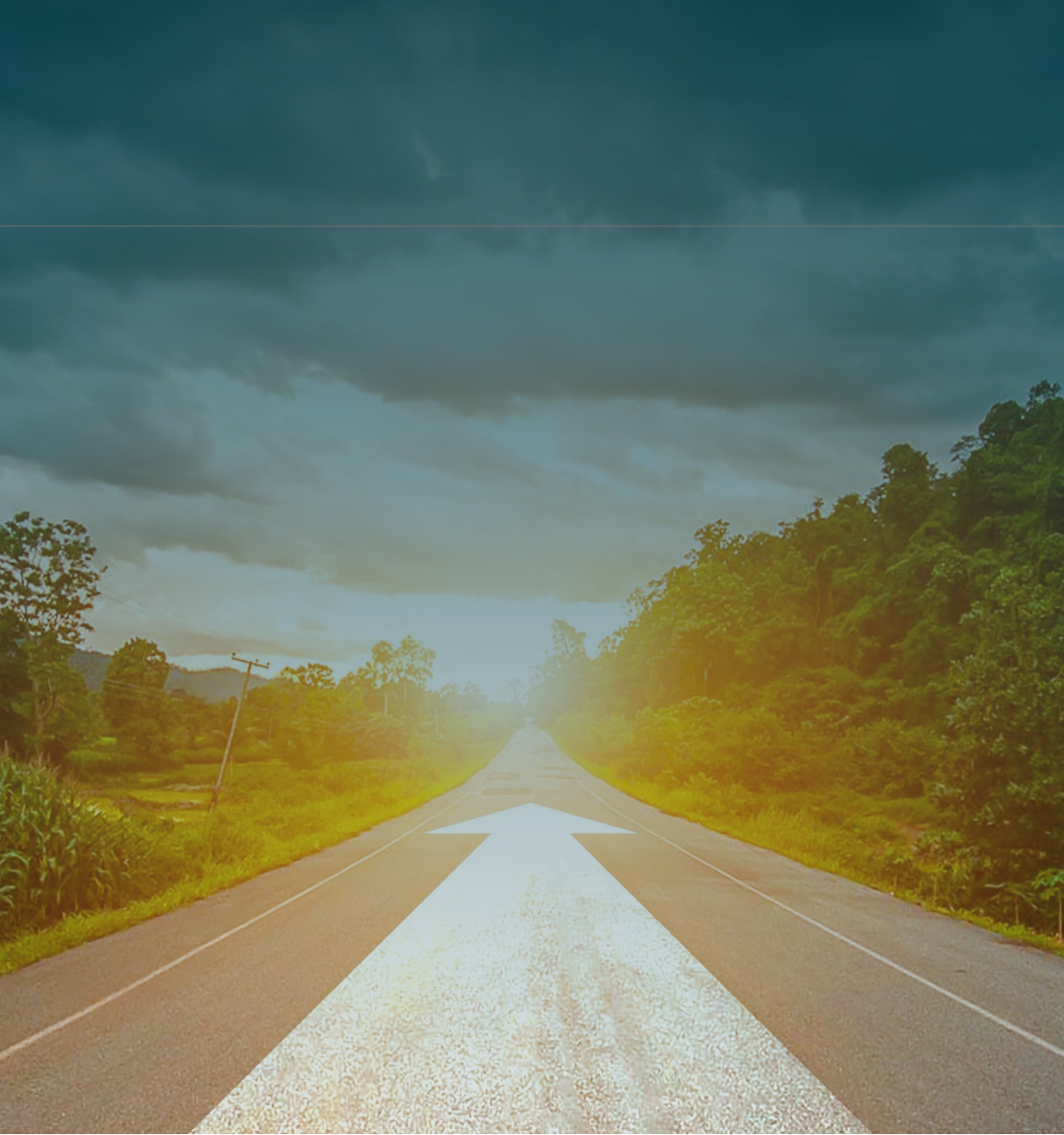


# INPS Group of Companies

Through business partnerships, INPS provides solutions, not just products.

INPS seamlessly integrates itself into your company.





# Our Mission

Through personal contributions, team work and continuous improvement, INPS is dedicated to providing defect-free, world-class products and services at competitive prices.

We provide a working environment where employees are empowered with the freedom of creativity and flexibility to promote career and company success.





# Our Vision

Fostering strong relationships with employees, suppliers, customers, and the community is integral to sustainable success.

By aligning with stakeholders and anticipating shifts, our company can adapt effectively in a dynamic industry.





Inclusion  
Respect  
Quality  
Innovation  
Teamwork

# Our Values

- Respect all People
- Constant activity towards quality improvement
- Encourage Initiative and Innovation
- Foster Teamwork
- Safeguard the Environment





# Quality Policy

Maintaining an ISO 9001:2015 compliant management system and appointing a dedicated management representative demonstrate a commitment to quality.

Training personnel and making adherence to documented procedures mandatory further ensures our effective operations.

We produce quality products, which meet or exceed our customer requirements.



# E

## Environmental

---

In an effort to minimize any impact on the environment, INPS uses all available methods to conduct business in an environmentally friendly manner.

# S

## Social

---

INPS strictly adheres to all labour standards ensuring a safe work environment, equality, as well as fair and ethical treatment of all staff.

# G

## Governance

---

INPS is proud to have a female CEO and a diverse management team which is compensated according to industry standards.





# Environmental Sustainability Initiatives

INPS prioritizes proper disposal of hazardous waste and is a member of Canada's NPRI program.

INPS promotes a culture of reusing, reducing and recycling in all applicable processes. Our employees reuse materials to the best possible ability without compromising quality.

Regular testing for air quality reinforces our commitment to environmental responsibility.

INPS promotes a culture of sustainability.





# Social

INPS is committed to timely and meaningful dialogue with all people regardless of race, gender, sexual orientation, religion, age, disabilities, belief, or ethnic origin.

Contributions to community organizations and clubs are made on a regular basis to help strengthen and build strong relationships in the community.





# Governance

INPS has a strict anti-bribery and anti-corruption policy.

Employee assistance programs contribute significantly to the well-being of our workplace.

Internal audits are conducted with production and administrative staff regularly to ensure all processes continue to meet ISO and industry standards, which in turn contributes to producing great products, and excelling in our processes.



# D

## Diversity

INPS is committed to diversity and inclusion, equal opportunity employment, and promoting a workplace free from discrimination.

# E

## Equity

INPS is committed to a Fair Wage Policy, competitive wages, and comprehensive benefits, including considerations for work-life balance.

# I

## Inclusion

INPS prioritizes equal employment opportunity in the workplace by supporting diversity within its workforce, with a focus on gender and ethnic minority representation.



## Employee Safety & Wellness

INPS strives to create and maintain a healthy and safe work environment at all times.

INPS cares about the Health and Wellbeing of their employees.

We offer flexible work hours, health initiatives, regular employee BBQs and access to occupational health services.







# Certifications, Memberships & Affiliations

## Certifications

WBE Canada-Certified Women Business Enterprise  
SAM Registered  
Joint Certification  
ISO 9001: 2015 Certification  
Controlled Goods Certification

## Memberships

Screen Printing and Graphic Imaging Association (SGIA)  
Excellence in Manufacturing Consortium (EMC)  
Canadian Urban Transit Association (CUTA)  
American Public Transportation Association (APTA)  
Railway Supply Institute (RSI)  
Photoluminescent Safety Association (PSA)  
Sign Association Canada (SAC)

## Affiliations

3M™ Select Platinum Graphics Provider  
3M™ Preferred Graphics Installer





# Contact Us

**info@inps.net**  
**inps.net**

**519.455.7647**  
**1.800.565.3509**